

PXR Rabbit Polyclonal Antibody



CAB1583

Product Information

Size:

20uL, 50uL, 100uL, 200uL

Observed MW:

49kDa

Calculated MW:

39kDa/43kDa/45kDa/48kDa/
49kDa/52kDa/53kDa

Applications:

WB IHC

Reactivity:

Human, Mouse, Rat

Antibody Information

Recommended dilutions:

WB 1:500 - 1:2000 IHC 1:50
- 1:200

Source:

Rabbit

Isotype:

IgG

Purification:

Affinity purification

Protein Background

This gene product belongs to the nuclear receptor superfamily, members of which are transcription factors characterized by a ligand-binding domain and a DNA-binding domain. The encoded protein is a transcriptional regulator of the cytochrome P450 gene CYP3A4, binding to the response element of the CYP3A4 promoter as a heterodimer with the 9-cis retinoic acid receptor RXR. It is activated by a range of compounds that induce CYP3A4, including dexamethasone and rifampicin. Several alternatively spliced transcripts encoding different isoforms, some of which use non-AUG (CUG) translation initiation codon, have been described for this gene. Additional transcript variants exist, however, they have not been fully characterized.

Immunogen information

Gene ID:

8856

Uniprot

O75469

Synonyms:

NR112; BXR; ONR1; PAR; PAR1; PAR2; PARq; PRR; PXR; SAR; SXR

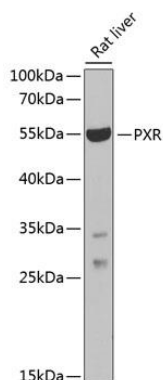
Immunogen:

A synthetic peptide corresponding to a sequence within amino acids 100-200 of human PXR (NP_071285.1).

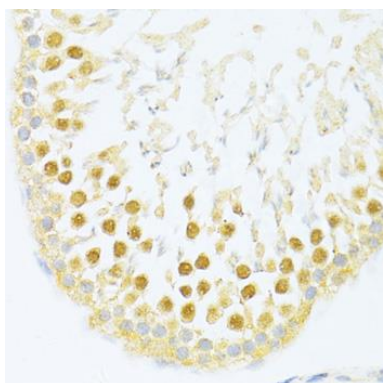
Storage:

Store at -20°C. Avoid freeze / thaw cycles. Buffer: PBS with 0.02% sodium azide, 50% glycerol, pH7.3.

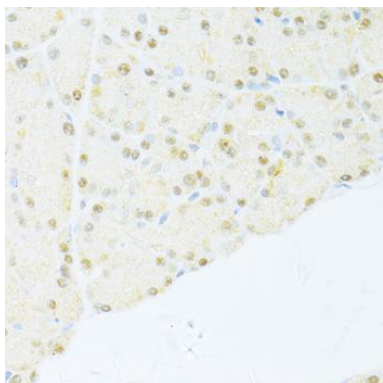
Product Images



Western blot analysis of extracts of rat liver, using PXR antibody (CAB1583) at 1:1000 dilution. Secondary antibody: HRP Goat Anti-Rabbit IgG (H+L) (CABS014) at 1:10000 dilution. Lysates/proteins: 25ug per lane. Blocking buffer: 3% nonfat dry milk in TBST. Detection: ECL Basic Kit (CABM00020). Exposure time: 10s.



Immunohistochemistry of paraffin-embedded rat testis using PXR antibody (CAB1583) at dilution of 1:100 (40x lens).



Immunohistochemistry of paraffin-embedded rat pancreas using PXR antibody (CAB1583) at dilution of 1:100 (40x lens).