

# UFM1 Rabbit Polyclonal Antibody



CAB15843

## Product Information

### Size:

20uL, 50uL, 100uL, 200uL

### Observed MW:

11kDa

### Calculated MW:

9kDa/10kDa

### Applications:

WB

### Reactivity:

Mouse

## Protein Background

UFM1 is a ubiquitin-like protein that is conjugated to target proteins by E1-like activating enzyme UBA5 (UBE1DC1; MIM 610552) and E2-like conjugating enzyme UFC1 (MIM 610554) in a manner analogous to ubiquitylation (see UBE2M; MIM 603173) (Komatsu et al., 2004 [PubMed 15071506]).

## Immunogen information

### Gene ID:

51569

### Uniprot

P61960

### Synonyms:

UFM1; BM-002; C13orf20

## Antibody Information

### Recommended dilutions:

WB 1:500 - 1:2000

### Source:

Rabbit

### Isotype:

IgG

### Purification:

Affinity purification

### Immunogen:

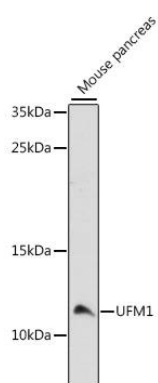
Recombinant fusion protein containing a sequence corresponding to amino acids 1-85 of human UFM1 (NP\_057701.1).

### Storage:

Store at -20°C. Avoid freeze / thaw cycles. Buffer: PBS with 0.02% sodium azide, 50% glycerol, pH7.3.

## Product Images

---



Western blot analysis of extracts of mouse pancreas, using UFM1 antibody (CAB15843) at 1:1000 dilution. Secondary antibody: HRP Goat Anti-Rabbit IgG (H+L) (CABS014) at 1:10000 dilution. Lysates/proteins: 25ug per lane. Blocking buffer: 3% nonfat dry milk in TBST. Detection: ECL Enhanced Kit (CABM00021). Exposure time: 90s.