

TPCN1 Rabbit Polyclonal Antibody



CAB15847

Product Information

Size:

20uL, 50uL, 100uL, 200uL

Observed MW:

94kDa

Calculated MW:

29kDa/94kDa/101kDa

Applications:

WB

Reactivity:

Mouse, Rat

Protein Background

Voltage-gated Ca(2+) and Na+ channels have 4 homologous domains, each containing 6 transmembrane segments, S1 to S6. TPCN1 is similar to these channels, but it has only 2 domains containing S1 to S6 (Ishibashi et al., 2000 [PubMed 10753632]).

Immunogen information

Gene ID:

53373

Uniprot

Q9ULQ1

Synonyms:

TPCN1; TPC1

Antibody Information

Recommended dilutions:

WB 1:500 - 1:2000

Source:

Rabbit

Isotype:

IgG

Purification:

Affinity purification

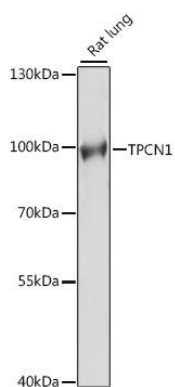
Immunogen:

Recombinant fusion protein containing a sequence corresponding to amino acids 692-816 of human TPCN1 (NP_060371.2).

Storage:

Store at -20°C. Avoid freeze / thaw cycles. Buffer: PBS with 0.02% sodium azide, 50% glycerol, pH7.3.

Product Images



Western blot analysis of extracts of rat lung, using TPCN1 antibody (CAB15847) at 1:1000 dilution. Secondary antibody: HRP Goat Anti-Rabbit IgG (H+L) (CABS014) at 1:10000 dilution. Lysates/proteins: 25ug per lane. Blocking buffer: 3% nonfat dry milk in TBST. Detection: ECL Basic Kit (CABM00020). Exposure time: 5s.