

ELP2 Rabbit Polyclonal Antibody



CAB15857

Product Information

Size:

20uL, 50uL, 100uL, 200uL

Observed MW:

92kDa

Calculated MW:

78kDa/84kDa/89kDa/92kDa/
99kDa

Applications:

WB

Reactivity:

Mouse, Rat

Antibody Information

Recommended dilutions:

WB 1:500 - 1:2000

Source:

Rabbit

Isotype:

IgG

Purification:

Affinity purification

Protein Background

The protein encoded by this gene is a core subunit of the elongator complex, a histone acetyltransferase complex that associates with RNA polymerase II. In addition to histone acetylation, the encoded protein effects transcriptional elongation and may help remodel chromatin.

Immunogen information

Gene ID:

55250

Uniprot

Q6IA86

Synonyms:

ELP2; MRT58; SHINC-2; STATIP1; StIP

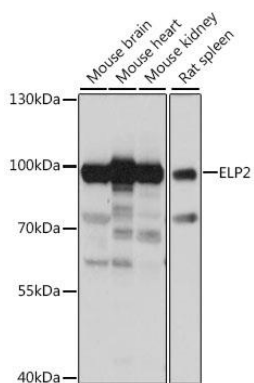
Immunogen:

Recombinant fusion protein containing a sequence corresponding to amino acids 300-600 of human ELP2 (NP_001229808.1).

Storage:

Store at -20°C. Avoid freeze / thaw cycles. Buffer: PBS with 0.02% sodium azide, 50% glycerol, pH7.3.

Product Images



Western blot analysis of extracts of various cell lines, using ELP2 antibody (CAB15857) at 1:1000 dilution. Secondary antibody: HRP Goat Anti-Rabbit IgG (H+L) (CABS014) at 1:10000 dilution. Lysates/proteins: 25ug per lane. Blocking buffer: 3% nonfat dry milk in TBST. Detection: ECL Basic Kit (CABM00020). Exposure time: 1s.