

LMBRD1 Rabbit Polyclonal Antibody



CAB15866

Product Information

Size:

20uL, 50uL, 100uL, 200uL

Observed MW:

50kDa

Calculated MW:

21kDa/44kDa/53kDa/61kDa

Applications:

WB IF

Reactivity:

Human, Mouse

Antibody Information

Recommended dilutions:

WB 1:500 - 1:2000 IF 1:50 - 1:200

Source:

Rabbit

Isotype:

IgG

Purification:

Affinity purification

Protein Background

This gene encodes a lysosomal membrane protein that may be involved in the transport and metabolism of cobalamin. This protein also interacts with the large form of the hepatitis delta antigen and may be required for the nucleocytoplasmic shuttling of the hepatitis delta virus. Mutations in this gene are associated with the vitamin B12 metabolism disorder termed, homocystinuria-megaloblastic anemia complementation type F.

Immunogen information

Gene ID:

55788

Uniprot

Q9NUN5

Synonyms:

LMBRD1; C6orf209; LMBD1; MAHCF; NESI

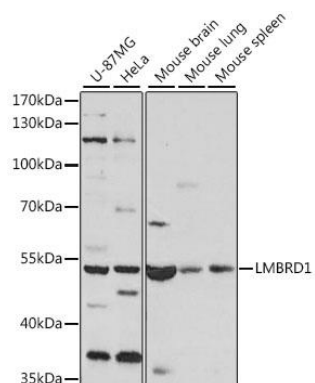
Immunogen:

Recombinant fusion protein containing a sequence corresponding to amino acids 220-300 of human LMBRD1 (NP_060838.3).

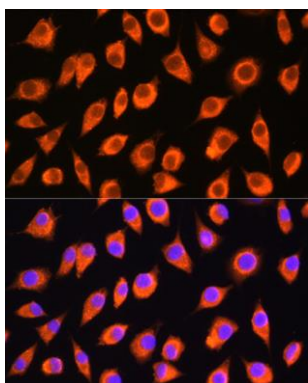
Storage:

Store at -20°C. Avoid freeze / thaw cycles. Buffer: PBS with 0.02% sodium azide, 50% glycerol, pH7.3.

Product Images



Western blot analysis of extracts of various cell lines, using LMBRD1 antibody (CAB15866) at 1:1000 dilution. Secondary antibody: HRP Goat Anti-Rabbit IgG (H+L) (CABS014) at 1:10000 dilution. Lysates/proteins: 25ug per lane. Blocking buffer: 3% nonfat dry milk in TBST. Detection: ECL Basic Kit (CABM00020). Exposure time: 5s.



Immunofluorescence analysis of L929 cells using LMBRD1 Rabbit pAb (CAB15866) at dilution of 1:100. Blue: DAPI for nuclear staining.