

# TEX11 Rabbit Polyclonal Antibody



CAB15868

---

## Product Information

### Size:

20uL, 50uL, 100uL, 200uL

### Observed MW:

108kDa

### Calculated MW:

71kDa/107kDa/108kDa

### Applications:

WB

### Reactivity:

Human, Mouse, Rat

## Antibody Information

### Recommended dilutions:

WB 1:500 - 1:2000

### Source:

Rabbit

### Isotype:

IgG

### Purification:

Affinity purification

## Protein Background

This gene is X-linked and is expressed in only male germ cells. Two alternatively spliced transcript variants encoding distinct isoforms have been found for this gene.

## Immunogen information

### Gene ID:

56159

### Uniprot

Q8IYF3

### Synonyms:

TEX11; SPGFX2; TGC1; TSGA3

### Immunogen:

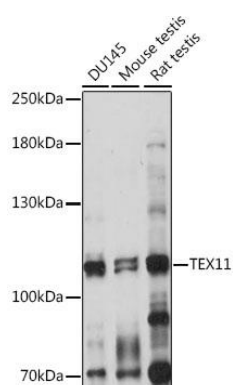
Recombinant protein of human TEX11

### Storage:

Store at -20°C. Avoid freeze / thaw cycles. Buffer: PBS with 0.02% sodium azide, 50% glycerol, pH7.3.

## Product Images

---



Western blot analysis of extracts of various cell lines, using TEX11 antibody (CAB15868) at 1:1000 dilution. Secondary antibody: HRP Goat Anti-Rabbit IgG (H+L) (CABS014) at 1:10000 dilution. Lysates/proteins: 25ug per lane. Blocking buffer: 3% nonfat dry milk in TBST. Detection: ECL Basic Kit (CABM00020). Exposure time: 10s.