

ELSPBP1 Rabbit Polyclonal Antibody



CAB15882

Product Information

Size:

20uL, 50uL, 100uL, 200uL

Observed MW:

26kDa

Calculated MW:

26kDa

Applications:

WB IF

Reactivity:

Mouse, Rat

Protein Background

The protein encoded by this gene belongs to the sperm-coating protein family of epididymal origin. This protein and its canine homolog are the first known examples of proteins with four tandemly arranged fibronectin type 2 (Fn2) domains in the Fn2-module protein family.

Immunogen information

Gene ID:

64100

Uniprot

Q96BH3

Synonyms:

ELSPBP1; E12; EDDM12; EL149; HE12

Antibody Information

Recommended dilutions:

WB 1:500 - 1:2000 IF 1:50 - 1:200

Source:

Rabbit

Isotype:

IgG

Purification:

Affinity purification

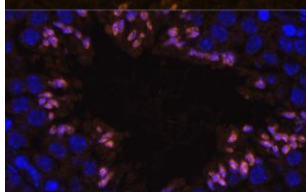
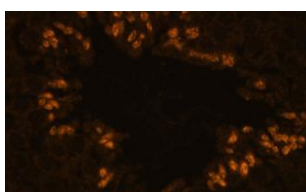
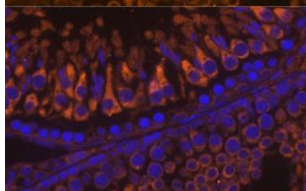
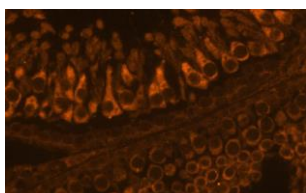
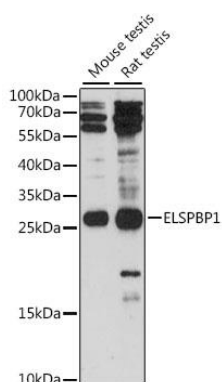
Immunogen:

Recombinant fusion protein containing a sequence corresponding to amino acids 110-223 of human ELSPBP1 (NP_071425.3).

Storage:

Store at -20°C. Avoid freeze / thaw cycles. Buffer: PBS with 0.02% sodium azide, 50% glycerol, pH7.3.

Product Images



Western blot analysis of extracts of various cell lines, using ELSPBP1 antibody (CAB15882) at 1:1000 dilution. Secondary antibody: HRP Goat Anti-Rabbit IgG (H+L) (CABS014) at 1:10000 dilution. Lysates/proteins: 25ug per lane. Blocking buffer: 3% nonfat dry milk in TBST. Detection: ECL Basic Kit (CABM00020). Exposure time: 90s.

Immunofluorescence analysis of rat testis using ELSPBP1 antibody (CAB15882) at dilution of 1:100. Blue: DAPI for nuclear staining.

Immunofluorescence analysis of mouse testis using ELSPBP1 antibody (CAB15882) at dilution of 1:100. Blue: DAPI for nuclear staining.