

MYOC Rabbit Polyclonal Antibody



CAB1589

Product Information

Size:

20uL, 50uL, 100uL, 200uL

Observed MW:

65kDa

Calculated MW:

56kDa

Applications:

WB

Reactivity:

Human, Mouse

Protein Background

MYOC encodes the protein myocilin, which is believed to have a role in cytoskeletal function. MYOC is expressed in many ocular tissues, including the trabecular meshwork, and was revealed to be the trabecular meshwork glucocorticoid-inducible response protein (TIGR). The trabecular meshwork is a specialized eye tissue essential in regulating intraocular pressure, and mutations in MYOC have been identified as the cause of hereditary juvenile-onset open-angle glaucoma.

Immunogen information

Gene ID:

4653

Uniprot

Q99972

Synonyms:

MYOC; GLC1A; GPOA; JOAG; JOAG1; TIGR; myocilin

Antibody Information

Recommended dilutions:

WB 1:500 - 1:2000

Source:

Rabbit

Isotype:

IgG

Purification:

Affinity purification

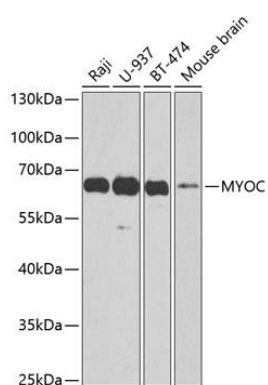
Immunogen:

Recombinant fusion protein containing a sequence corresponding to amino acids 245-504 of human MYOC (NP_000252.1).

Storage:

Store at -20°C. Avoid freeze / thaw cycles. Buffer: PBS with 0.02% sodium azide, 50% glycerol, pH7.3.

Product Images



Western blot analysis of extracts of various cell lines, using MYOC antibody (CAB1589) at 1:1000 dilution. Secondary antibody: HRP Goat Anti-Rabbit IgG (H+L) (CABS014) at 1:10000 dilution. Lysates/proteins: 25ug per lane. Blocking buffer: 3% nonfat dry milk in TBST. Detection: ECL Basic Kit (CABM00020). Exposure time: 60s.