

# CEP85 Rabbit Polyclonal Antibody



CAB15891

---

## Product Information

### Size:

20uL, 50uL, 100uL, 200uL

### Observed MW:

105kDa

### Calculated MW:

22kDa/80kDa/85kDa

### Applications:

WB IF

### Reactivity:

Human, Mouse, Rat

## Protein Background

This gene encodes a protein that belongs to the centrosome-associated family of proteins. The centrosome is a subcellular organelle in the animal cell that functions as a microtubule organizing center and is involved in cell-cycle progression. Alternate splicing results in multiple transcript variants.

## Immunogen information

### Gene ID:

64793

### Uniprot

Q6P2H3

### Synonyms:

CEP85; CCDC21

## Antibody Information

### Recommended dilutions:

WB 1:500 - 1:2000 IF 1:50 - 1:200

### Source:

Rabbit

### Isotype:

IgG

### Purification:

Affinity purification

### Immunogen:

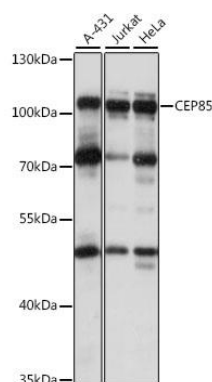
Recombinant fusion protein containing a sequence corresponding to amino acids 130-430 of human CEP85 (NP\_073615.2).

### Storage:

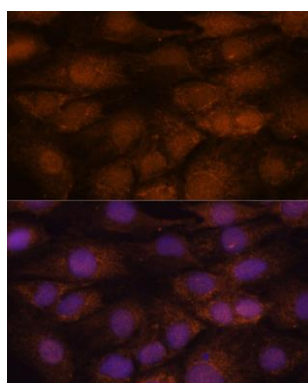
Store at -20°C. Avoid freeze / thaw cycles. Buffer: PBS with 0.02% sodium azide, 50% glycerol, pH7.3.

## Product Images

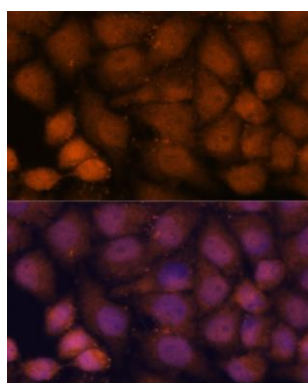
---



Western blot analysis of extracts of various cell lines, using CEP85 antibody (CAB15891) at 1:1000 dilution. Secondary antibody: HRP Goat Anti-Rabbit IgG (H+L) (CABS014) at 1:10000 dilution. Lysates/proteins: 25ug per lane. Blocking buffer: 3% nonfat dry milk in TBST. Detection: ECL Basic Kit (CABM00020). Exposure time: 10s.



Immunofluorescence analysis of C6 cells using CEP85 antibody (CAB15891) at dilution of 1:100. Blue: DAPI for nuclear staining.



Immunofluorescence analysis of HeLa cells using CEP85 antibody (CAB15891) at dilution of 1:100. Blue: DAPI for nuclear staining.