

# GNPTAB Rabbit Polyclonal Antibody



CAB15895

## Product Information

### Size:

20uL, 50uL, 100uL, 200uL

### Observed MW:

144kDa

### Calculated MW:

55kDa/143kDa

### Applications:

WB

### Reactivity:

Human

## Antibody Information

### Recommended dilutions:

WB 1:500 - 1:2000

### Source:

Rabbit

### Isotype:

IgG

### Purification:

Affinity purification

## Protein Background

This gene encodes two of three subunit types of the membrane-bound enzyme N-acetylglucosamine-1-phosphotransferase, a heterohexameric complex composed of two alpha, two beta, and two gamma subunits. The encoded protein is proteolytically cleaved at the Lys928-Asp929 bond to yield mature alpha and beta polypeptides while the gamma subunits are the product of a distinct gene (GeneID 84572). In the Golgi apparatus, the heterohexameric complex catalyzes the first step in the synthesis of mannose 6-phosphate recognition markers on certain oligosaccharides of newly synthesized lysosomal enzymes. These recognition markers are essential for appropriate trafficking of lysosomal enzymes. Mutations in this gene have been associated with both mucopolipidosis II and mucopolipidosis IIIA.

## Immunogen information

### Gene ID:

79158

### Uniprot

Q3T906

### Synonyms:

GNPTAB; GNPTA; ICD

### Immunogen:

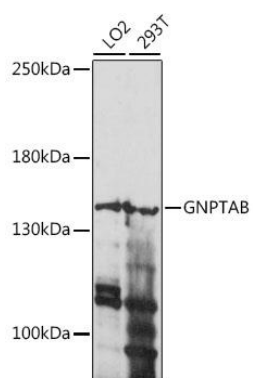
Recombinant fusion protein containing a sequence corresponding to amino acids 42-350 of human GNPTAB (NP\_077288.2).

### Storage:

Store at -20°C. Avoid freeze / thaw cycles. Buffer: PBS with 0.02% sodium azide, 50% glycerol, pH7.3.

## Product Images

---



Western blot analysis of extracts of various cell lines, using GNPTAB antibody (CAB15895) at 1:1000 dilution. Secondary antibody: HRP Goat Anti-Rabbit IgG (H+L) (CABS014) at 1:10000 dilution. Lysates/proteins: 25ug per lane. Blocking buffer: 3% nonfat dry milk in TBST. Detection: ECL Enhanced Kit (CABM00021). Exposure time: 90s.