

ESPN Rabbit Polyclonal Antibody



CAB15908

Product Information

Size:

20uL, 50uL, 100uL, 200uL

Observed MW:

110-120kDa

Calculated MW:

31kDa/91kDa

Applications:

WB IHC

Reactivity:

Human, Mouse, Rat

Protein Background

This gene encodes a multifunctional actin-bundling protein. It plays a major role in regulating the organization, dimensions, dynamics, and signaling capacities of the actin filament-rich, microvillus-type specializations that mediate sensory transduction in various mechanosensory and chemosensory cells. Mutations in this gene are associated with autosomal recessive neurosensory deafness, and autosomal dominant sensorineural deafness without vestibular involvement.

Immunogen information

Gene ID:

83715

Uniprot

B1AK53

Synonyms:

ESPN; DFNB36; LP2654; espin

Antibody Information

Recommended dilutions:

WB 1:500 - 1:2000 IHC 1:50 - 1:200

Source:

Rabbit

Isotype:

IgG

Purification:

Affinity purification

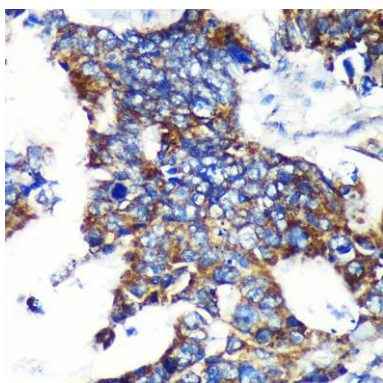
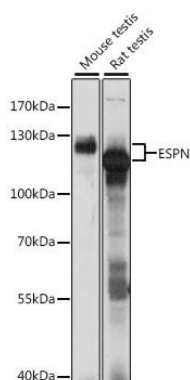
Immunogen:

Recombinant fusion protein containing a sequence corresponding to amino acids 585-854 of human ESPN (NP_113663.2).

Storage:

Store at -20°C. Avoid freeze / thaw cycles. Buffer: PBS with 0.02% sodium azide, 50% glycerol, pH7.3.

Product Images



Western blot analysis of extracts of various cell lines, using ESPN antibody (CAB15908) at 1:1000 dilution. Secondary antibody: HRP Goat Anti-Rabbit IgG (H+L) (CABS014) at 1:10000 dilution. Lysates/proteins: 25ug per lane. Blocking buffer: 3% nonfat dry milk in TBST. Detection: ECL Basic Kit (CABM00020). Exposure time: 10s.

Immunohistochemistry of paraffin-embedded Human colon carcinoma using ESPN Rabbit pAb (CAB15908) at dilution of 1:100 (40x lens).