

SLC4A11 Rabbit Polyclonal Antibody



CAB15910

Product Information

Size:

20uL, 50uL, 100uL, 200uL

Observed MW:

100kDa/110kDa

Calculated MW:

45kDa/98kDa/99kDa/103kDa

Applications:

WB

Reactivity:

Human, Mouse

Protein Background

This gene encodes a voltage-regulated, electrogenic sodium-coupled borate cotransporter that is essential for borate homeostasis, cell growth and cell proliferation. Mutations in this gene have been associated with a number of endothelial corneal dystrophies including recessive corneal endothelial dystrophy 2, corneal dystrophy and perceptive deafness, and Fuchs endothelial corneal dystrophy. Multiple transcript variants encoding different isoforms have been described.

Immunogen information

Gene ID:

83959

Uniprot

Q8NBS3

Synonyms:

SLC4A11; BTR1; CDPD1; CHED; CHED2; NABC1; dJ794I6.2

Antibody Information

Recommended dilutions:

WB 1:500 - 1:2000

Source:

Rabbit

Isotype:

IgG

Purification:

Affinity purification

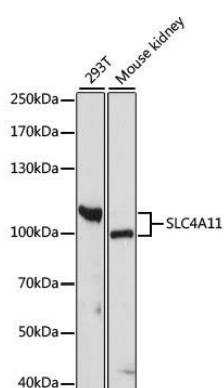
Immunogen:

Recombinant fusion protein containing a sequence corresponding to amino acids 1-180 of human SLC4A11 (NP_114423.1).

Storage:

Store at -20°C. Avoid freeze / thaw cycles. Buffer: PBS with 0.02% sodium azide, 50% glycerol, pH7.3.

Product Images



Western blot analysis of extracts of various cell lines, using SLC4A11 antibody (CAB15910) at 1000 dilution. Secondary antibody: HRP Goat Anti-Rabbit IgG (H+L) (CABS014) at 1:10000 dilution. Lysates/proteins: 25ug per lane. Blocking buffer: 3% nonfat dry milk in TBST. Detection: ECL Basic Kit (CABM00020). Exposure time: 90s.