

# AFAP1L2 Rabbit Polyclonal Antibody



CAB15916

---

## Product Information

### Size:

20uL, 50uL, 100uL, 200uL

### Observed MW:

110kDa

### Calculated MW:

38kDa/90kDa/91kDa/93kDa

### Applications:

WB

### Reactivity:

Human

## Antibody Information

### Recommended dilutions:

WB 1:500 - 1:2000

### Source:

Rabbit

### Isotype:

IgG

### Purification:

Affinity purification

## Protein Background

### Immunogen information

#### Gene ID:

84632

#### Uniprot

Q8N4X5

#### Synonyms:

AFAP1L2; CTB-1144G6.4; KIAA1914; XB130

#### Immunogen:

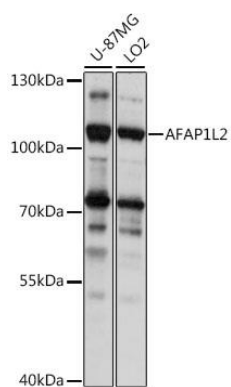
Recombinant fusion protein containing a sequence corresponding to amino acids 1-300 of human AFAP1L2 (NP\_001001936.1).

#### Storage:

Store at -20°C. Avoid freeze / thaw cycles. Buffer: PBS with 0.02% sodium azide, 50% glycerol, pH7.3.

## Product Images

---



Western blot analysis of extracts of various cell lines, using AFAP1L2 antibody (CAB15916) at 1:1000 dilution. Secondary antibody: HRP Goat Anti-Rabbit IgG (H+L) (CABS014) at 1:10000 dilution. Lysates/proteins: 25ug per lane. Blocking buffer: 3% nonfat dry milk in TBST. Detection: ECL Basic Kit (CABM00020). Exposure time: 1s.