

TUBGCP6 Rabbit Polyclonal Antibody



CAB15921

Product Information

Size:

20uL, 50uL, 100uL, 200uL

Observed MW:

250kDa

Calculated MW:

196kDa/198kDa/200kDa

Applications:

WB IHC

Reactivity:

Human, Mouse, Rat

Antibody Information

Recommended dilutions:

WB 1:500 - 1:2000 IHC 1:50
- 1:200

Source:

Rabbit

Isotype:

IgG

Purification:

Affinity purification

Protein Background

The protein encoded by this gene is part of a large multisubunit complex required for microtubule nucleation at the centrosome.

Immunogen information

Gene ID:

85378

Uniprot

Q96RT7

Synonyms:

TUBGCP6; GCP-6; GCP6; MCCR1; MCCR1P1; MCPHCR

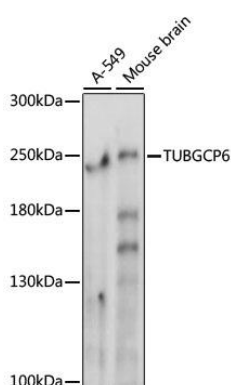
Immunogen:

Recombinant fusion protein containing a sequence corresponding to amino acids 600-900 of human TUBGCP6 (NP_065194.2).

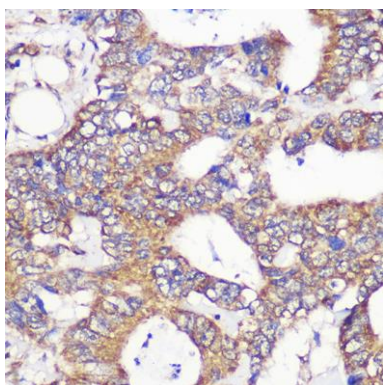
Storage:

Store at -20°C. Avoid freeze / thaw cycles. Buffer: PBS with 0.02% sodium azide, 50% glycerol, pH7.3.

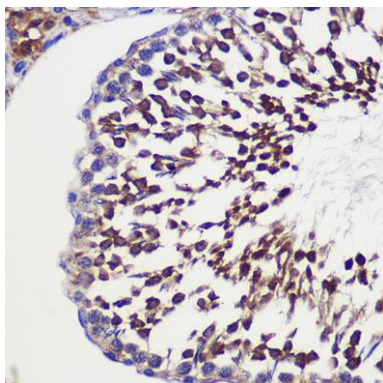
Product Images



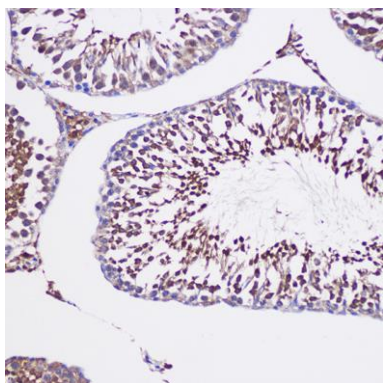
Western blot analysis of extracts of various cell lines, using TUBGCP6 antibody (CAB15921) at 1000 dilution. Secondary antibody: HRP Goat Anti-Rabbit IgG (H+L) (CABS014) at 1:10000 dilution. Lysates/proteins: 25ug per lane. Blocking buffer: 3% nonfat dry milk in TBST. Detection: ECL Basic Kit (CABM00020). Exposure time: 10s.



Immunohistochemistry of paraffin-embedded Human colon carcinoma using TUBGCP6 Rabbit pAb (CAB15921) at dilution of 1:100 (40x lens).



Immunohistochemistry of paraffin-embedded Rat testis using TUBGCP6 Rabbit pAb (CAB15921) at dilution of 1:100 (40x lens).



Immunohistochemistry of paraffin-embedded Rat testis using TUBGCP6 Rabbit pAb (CAB15921) at dilution of 1:100 (20x lens).