

# TRIM4 Rabbit Polyclonal Antibody



CAB15922

---

## Product Information

### Size:

20uL, 50uL, 100uL, 200uL

### Observed MW:

57kDa

### Calculated MW:

34kDa/54kDa/57kDa

### Applications:

WB IHC IF

### Reactivity:

Human, Mouse

## Antibody Information

### Recommended dilutions:

WB 1:500 - 1:2000 IHC 1:50  
- 1:200 IF 1:50 - 1:200

### Source:

Rabbit

### Isotype:

IgG

### Purification:

Affinity purification

## Protein Background

The protein encoded by this gene is a member of the tripartite motif (TRIM) family. The TRIM motif includes three zinc-binding domains, a RING, a B-box type 1 and a B-box type 2, and a coiled-coil region. The protein localizes to cytoplasmic bodies. Its function has not been identified. Alternatively spliced transcript variants that encode different isoforms have been described.

## Immunogen information

### Gene ID:

89122

### Uniprot

Q9C037

### Synonyms:

TRIM4; RNF87

### Immunogen:

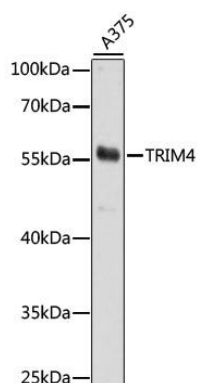
Recombinant fusion protein containing a sequence corresponding to amino acids 1-280 of human TRIM4 (NP\_149082.1).

### Storage:

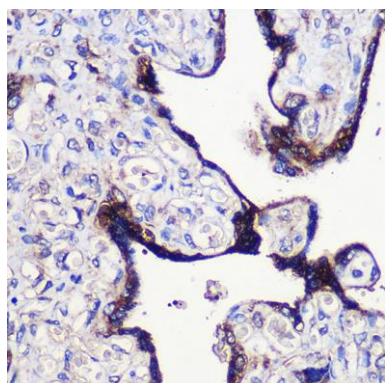
Store at -20°C. Avoid freeze / thaw cycles. Buffer: PBS with 0.02% sodium azide, 50% glycerol, pH7.3.

## Product Images

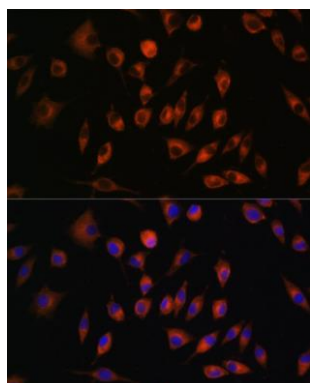
---



Western blot analysis of extracts of A375 cells, using TRIM4 antibody (CAB15922) at 1000 dilution. Secondary antibody: HRP Goat Anti-Rabbit IgG (H+L) (CABS014) at 1:10000 dilution. Lysates/proteins: 25ug per lane. Blocking buffer: 3% nonfat dry milk in TBST. Detection: ECL Basic Kit (CABM00020). Exposure time: 3min.



Immunohistochemistry of paraffin-embedded Human placenta using TRIM4 Rabbit pAb (CAB15922) at dilution of 1:100 (40x lens).



Immunofluorescence analysis of L929 cells using TRIM4 antibody (CAB15922) at dilution of 1:100. Blue: DAPI for nuclear staining.