

# ARMC6 Rabbit Polyclonal Antibody



CAB15931

## Product Information

### Size:

20uL, 50uL, 100uL, 200uL

### Observed MW:

54kDa

### Calculated MW:

51kDa/54kDa

### Applications:

WB IF

### Reactivity:

Human, Mouse, Rat

## Protein Background

The function of this gene's protein product has not been determined. A related protein in mouse suggests that this protein has a conserved function. Two transcript variants encoding different isoforms have been found for this gene.

## Immunogen information

### Gene ID:

93436

### Uniprot

Q6NXE6

### Synonyms:

ARMC6; R30923\_1

## Antibody Information

### Recommended dilutions:

WB 1:500 - 1:2000 IF 1:50 - 1:200

### Source:

Rabbit

### Isotype:

IgG

### Purification:

Affinity purification

### Immunogen:

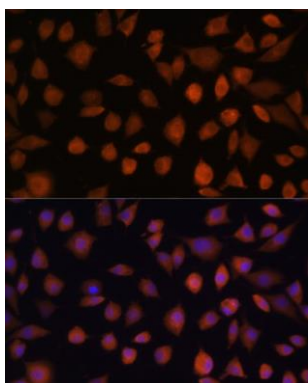
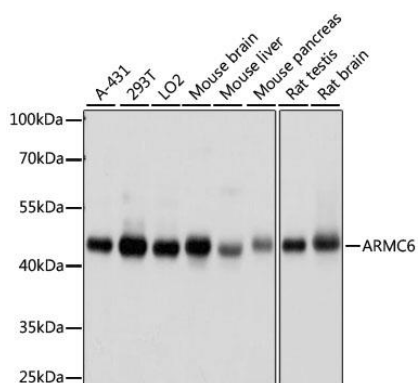
Recombinant fusion protein containing a sequence corresponding to amino acids 1-220 of human ARMC6 (NP\_001186125.1).

### Storage:

Store at -20°C. Avoid freeze / thaw cycles. Buffer: PBS with 0.02% sodium azide, 50% glycerol, pH7.3.

## Product Images

---



Western blot analysis of extracts of various cell lines, using ARMC6 antibody (CAB15931) at 1000 dilution. Secondary antibody: HRP Goat Anti-Rabbit IgG (H+L) (CABS014) at 1:10000 dilution. Lysates/proteins: 25ug per lane. Blocking buffer: 3% nonfat dry milk in TBST. Detection: ECL Basic Kit (CABM00020). Exposure time: 10s.

Immunofluorescence analysis of L929 cells using ARMC6 antibody (CAB15931) at dilution of 1:100. Blue: DAPI for nuclear staining.