

# EDARADD Rabbit Polyclonal Antibody



CAB15950

## Product Information

### Size:

20uL, 50uL, 100uL, 200uL

### Observed MW:

25kDa

### Calculated MW:

23kDa/24kDa

### Applications:

WB

### Reactivity:

Human

## Antibody Information

### Recommended dilutions:

WB 1:500 - 1:2000

### Source:

Rabbit

### Isotype:

IgG

### Purification:

Affinity purification

## Protein Background

This gene was identified by its association with ectodermal dysplasia, a genetic disorder characterized by defective development of hair, teeth, and eccrine sweat glands. The protein encoded by this gene is a death domain-containing protein, and is found to interact with EDAR, a death domain receptor known to be required for the development of hair, teeth and other ectodermal derivatives. This protein and EDAR are coexpressed in epithelial cells during the formation of hair follicles and teeth. Through its interaction with EDAR, this protein acts as an adaptor, and links the receptor to downstream signaling pathways. Two alternatively spliced transcript variants of this gene encoding distinct isoforms have been reported.

## Immunogen information

### Gene ID:

128178

### Uniprot

Q8WWZ3

### Synonyms:

EDARADD; ECTD11A; ECTD11B; ED3; EDA3

### Immunogen:

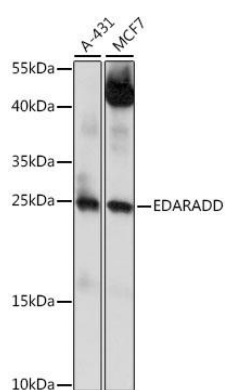
Recombinant fusion protein containing a sequence corresponding to amino acids 1-215 of human EDARADD (NP\_665860.2).

### Storage:

Store at -20°C. Avoid freeze / thaw cycles. Buffer: PBS with 0.02% sodium azide, 50% glycerol, pH7.3.

## Product Images

---



Western blot analysis of extracts of various cell lines, using EDARADD antibody (CAB15950) at 1:1000 dilution. Secondary antibody: HRP Goat Anti-Rabbit IgG (H+L) (CABS014) at 1:10000 dilution. Lysates/proteins: 25ug per lane. Blocking buffer: 3% nonfat dry milk in TBST. Detection: ECL Basic Kit (CABM00020). Exposure time: 60s.