

KHDRBS2 Rabbit Polyclonal Antibody



CAB15969

Product Information

Size:

20uL, 50uL, 100uL, 200uL

Observed MW:

Calculated MW:

38kDa

Applications:

IF

Reactivity:

Human

Antibody Information

Recommended dilutions:

IF 1:50 - 1:200

Source:

Rabbit

Isotype:

IgG

Purification:

Affinity purification

Protein Background

Immunogen information

Gene ID:

202559

Uniprot

Q5VWX1

Synonyms:

KHDRBS2; SLM-1; SLM1

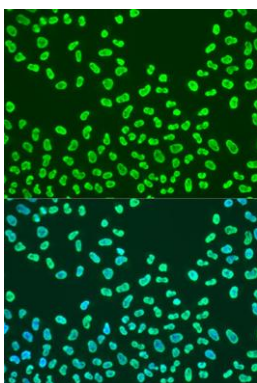
Immunogen:

A synthetic peptide corresponding to a sequence within amino acids 200 to the C-terminus of human KHDRBS2 (NP_689901.2).

Storage:

Store at -20°C. Avoid freeze / thaw cycles. Buffer: PBS with 0.02% sodium azide, 50% glycerol, pH7.3.

Product Images



Immunofluorescence analysis of U2OS cells using KHDRBS2 antibody (CAB15969) at dilution of 1:100. Blue: DAPI for nuclear staining.