

FREM2 Rabbit Polyclonal Antibody



CAB15980

Product Information

Size:

20uL, 50uL, 100uL, 200uL

Observed MW:

351kDa

Calculated MW:

295kDa/351kDa

Applications:

WB IF

Reactivity:

Human, Mouse,

Protein Background

This gene encodes an integral membrane protein containing numerous CSPG (chondroitin sulfate proteoglycan element) repeats and Calx-beta domains. The encoded protein localizes to the basement membrane, forming a ternary complex that plays a role in epidermal-dermal interactions. This protein is important for the integrity of skin and renal epithelia. Mutations in this gene are associated with Fraser syndrome.

Immunogen information

Gene ID:

341640

Uniprot

Q5SZK8

Synonyms:

FREM2

Antibody Information

Recommended dilutions:

WB 1:500 - 1:2000 IF 1:50 - 1:200

Source:

Rabbit

Isotype:

IgG

Purification:

Affinity purification

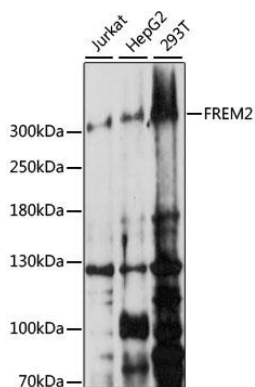
Immunogen:

Recombinant fusion protein containing a sequence corresponding to amino acids 47-300 of human FREM2 (NP_997244.4).

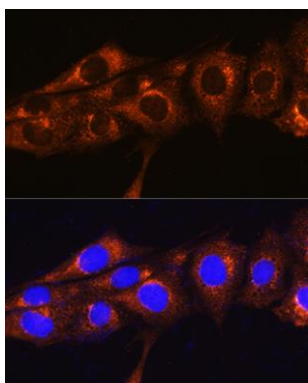
Storage:

Store at -20°C. Avoid freeze / thaw cycles. Buffer: PBS with 0.02% sodium azide, 50% glycerol, pH7.3.

Product Images



Western blot analysis of extracts of various cell lines, using FREM2 antibody (CAB15980) at 1:1000 dilution. Secondary antibody: HRP Goat Anti-Rabbit IgG (H+L) (CABS014) at 1:10000 dilution. Lysates/proteins: 25ug per lane. Blocking buffer: 3% nonfat dry milk in TBST. Detection: ECL Basic Kit (CABM00020). Exposure time: 150s.



Immunofluorescence analysis of NIH/3T3 cells using FREM2 Rabbit pAb (CAB15980) at dilution of 1:100. Blue: DAPI for nuclear staining.