

BOLA3 Rabbit Polyclonal Antibody



CAB15985

Product Information

Size:

20uL, 50uL, 100uL, 200uL

Observed MW:

12kDa

Calculated MW:

11kDa/12kDa

Applications:

WB IHC

Reactivity:

Human, Mouse, Rat

Protein Background

This gene encodes a protein that plays an essential role in the production of iron-sulfur (Fe-S) clusters for the normal maturation of lipoate-containing 2-oxoacid dehydrogenases, and for the assembly of the mitochondrial respiratory chain complexes. Mutation in this gene has been associated with multiple mitochondrial dysfunctions syndrome-2. Two alternatively spliced transcript variants encoding different isoforms with distinct subcellular localization have been reported for this gene (PMID:21944046).

Immunogen information

Gene ID:

388962

Uniprot

Q53S33

Synonyms:

BOLA3; MMDS2

Antibody Information

Recommended dilutions:

WB 1:500 - 1:2000 IHC 1:50
- 1:200

Source:

Rabbit

Isotype:

IgG

Purification:

Affinity purification

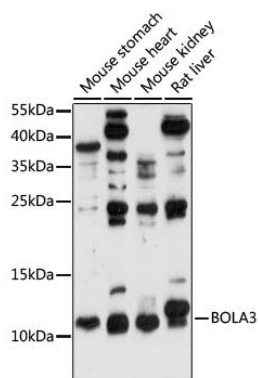
Immunogen:

Recombinant fusion protein containing a sequence corresponding to amino acids 1-68 of human BOLA3 (NP_997717.2).

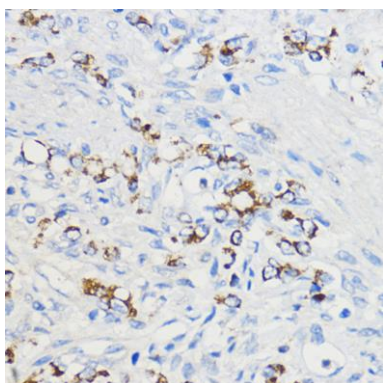
Storage:

Store at -20°C. Avoid freeze / thaw cycles. Buffer: PBS with 0.02% sodium azide, 50% glycerol, pH7.3.

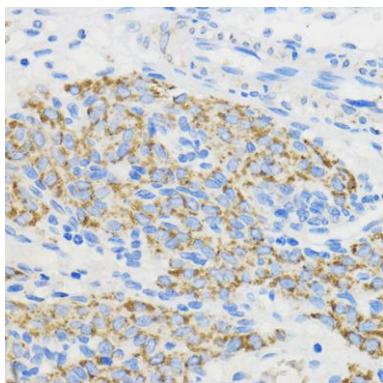
Product Images



Western blot analysis of extracts of various cell lines, using BOLA3 antibody (CAB15985) at 1:1000 dilution. Secondary antibody: HRP Goat Anti-Rabbit IgG (H+L) (CABS014) at 1:10000 dilution. Lysates/proteins: 25ug per lane. Blocking buffer: 3% nonfat dry milk in TBST. Detection: ECL Enhanced Kit (CABM00021). Exposure time: 90s.



Immunohistochemistry of paraffin-embedded Human oophoroma using BOLA3 Rabbit pAb (CAB15985) at dilution of 1:50 (40x lens).



Immunohistochemistry of paraffin-embedded Rat ovary using BOLA3 Rabbit pAb (CAB15985) at dilution of 1:50 (40x lens).