

ANT1/ANT2/ANT3/ANT4 Rabbit Polyclonal Antibody

CAB15988



Product Information

Size:

20uL, 50uL, 100uL, 200uL

Observed MW:

30kDa

Calculated MW:

33kDa/32kDa/35kDa

Applications:

WB IHC

Reactivity:

Human, Mouse, Rat

Antibody Information

Recommended dilutions:

WB 1:500 - 1:2000 IHC 1:50 - 1:200

Source:

Rabbit

Isotype:

IgG

Purification:

Affinity purification

Protein Background

Immunogen information

Gene ID:

291/292/293/83447

Uniprot

P12235/P05141/P12236/Q9H0C2

Synonyms:

ANT1/ANT2/ANT3/ANT4

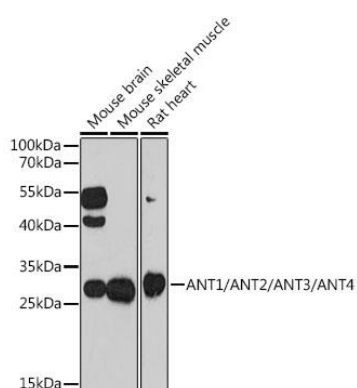
Immunogen:

A synthetic peptide corresponding to a sequence within amino acids 200 to the C-terminus of human ANT1 (NP_001142.2).

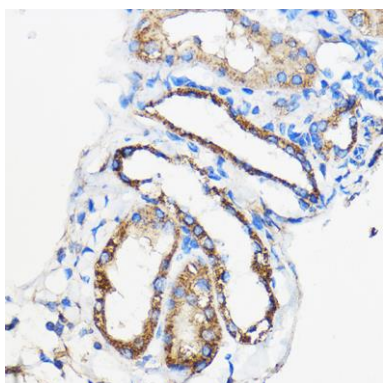
Storage:

Store at -20°C. Avoid freeze / thaw cycles. Buffer: PBS with 0.02% sodium azide, 50% glycerol, pH7.3.

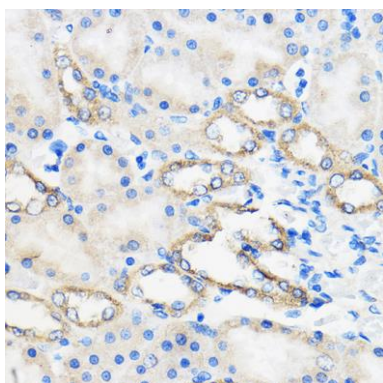
Product Images



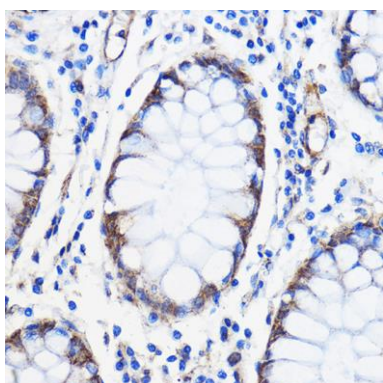
Western blot analysis of extracts of various cell lines, using ANT1/ANT2/ANT3/ANT4 antibody (CAB15988) at 1:1000 dilution. Secondary antibody: HRP Goat Anti-Rabbit IgG (H+L) (CABS014) at 1:10000 dilution. Lysates/proteins: 25ug per lane. Blocking buffer: 3% nonfat dry milk in TBST. Detection: ECL Enhanced Kit (CABM00021). Exposure time: 150s.



Immunohistochemistry of paraffin-embedded Mouse kidney using ANT1/ANT2/ANT3/ANT4 Rabbit pAb (CAB15988) at dilution of 1:50 (40x lens).



Immunohistochemistry of paraffin-embedded Rat kidney using ANT1/ANT2/ANT3/ANT4 Rabbit pAb (CAB15988) at dilution of 1:50 (40x lens).



Immunohistochemistry of paraffin-embedded Human colon carcinoma using ANT1/ANT2/ANT3/ANT4 Rabbit pAb (CAB15988) at dilution of 1:50 (40x lens).