

# SULT1A1 Rabbit Polyclonal Antibody



CAB1599

## Product Information

### Size:

20uL, 50uL, 100uL, 200uL

### Observed MW:

34kDa

### Calculated MW:

25kDa/34kDa

### Applications:

WB IHC

### Reactivity:

Human, Mouse, Rat

## Antibody Information

### Recommended dilutions:

WB 1:500 - 1:2000 IHC 1:50 - 1:200

### Source:

Rabbit

### Isotype:

IgG

### Purification:

Affinity purification

## Protein Background

Sulfotransferase enzymes catalyze the sulfate conjugation of many hormones, neurotransmitters, drugs, and xenobiotic compounds. These cytosolic enzymes are different in their tissue distributions and substrate specificities. The gene structure (number and length of exons) is similar among family members. This gene encodes one of two phenol sulfotransferases with thermostable enzyme activity. Multiple alternatively spliced variants that encode two isoforms have been identified for this gene.

## Immunogen information

### Gene ID:

6817

### Uniprot

P50225

### Synonyms:

SULT1A1; HAST1/HAST2; P-PST; PST; ST1A1; ST1A3; STP; STP1; TSPST1

### Immunogen:

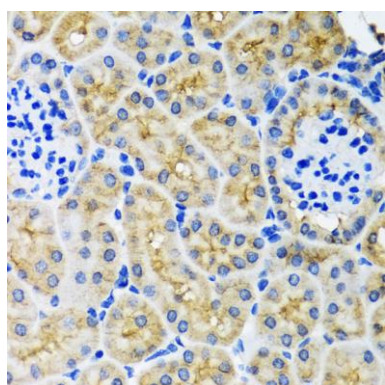
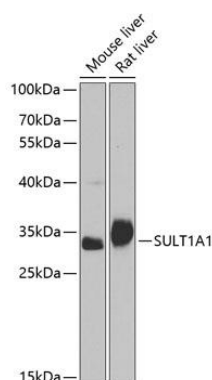
Recombinant fusion protein containing a sequence corresponding to amino acids 1-295 of human SULT1A1 (NP\_803565.1).

### Storage:

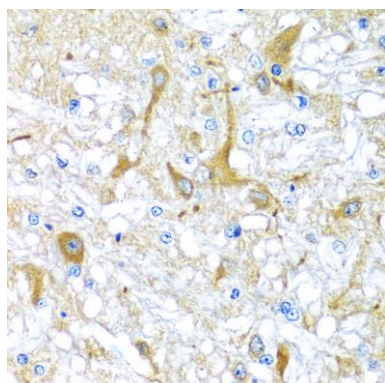
Store at -20°C. Avoid freeze / thaw cycles. Buffer: PBS with 0.02% sodium azide, 50% glycerol, pH7.3.

## Product Images

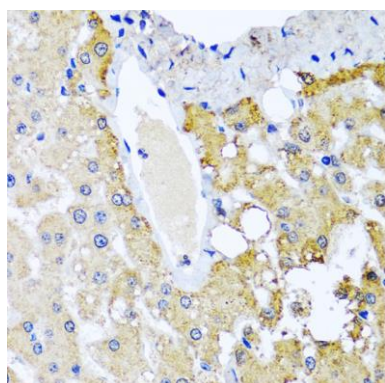
---



Immunohistochemistry of paraffin-embedded mouse kidney using SULT1A1 antibody (CAB1599) at dilution of 1:100 (40x lens).



Immunohistochemistry of paraffin-embedded rat brain using SULT1A1 antibody (CAB1599) at dilution of 1:100 (40x lens).



Immunohistochemistry of paraffin-embedded human liver damage using SULT1A1 antibody (CAB1599) at dilution of 1:100 (40x lens).