

# SLC14A1 Rabbit Polyclonal Antibody



CAB15991

---

## Product Information

### Size:

20uL, 50uL, 100uL, 200uL

### Observed MW:

43kDa

### Calculated MW:

42kDa/48kDa

### Applications:

WB IHC IF

### Reactivity:

Human, Mouse, Rat

## Antibody Information

### Recommended dilutions:

WB 1:500 - 1:2000 IHC

1:100 - 1:200 IF 1:50 -

1:200

### Source:

Rabbit

### Isotype:

IgG

### Purification:

Affinity purification

## Protein Background

The protein encoded by this gene is a membrane transporter that mediates urea transport in erythrocytes. This gene forms the basis for the Kidd blood group system.

## Immunogen information

### Gene ID:

6563

### Uniprot

Q13336

### Synonyms:

SLC14A1; HUT11; HsT1341; JK; RACH1; RACH2; UT-B1; UT1; UTE

### Immunogen:

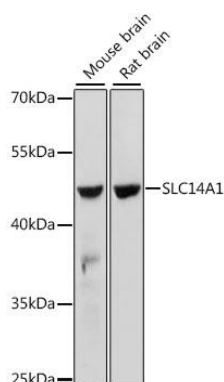
A synthetic peptide corresponding to a sequence within amino acids 100 to the C-terminus of human SLC14A1 (NP\_001295208.1).

### Storage:

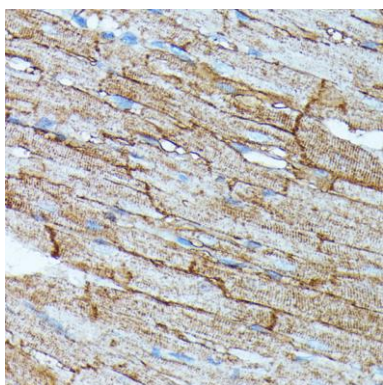
Store at -20°C. Avoid freeze / thaw cycles. Buffer: PBS with 0.02% sodium azide, 50% glycerol, pH7.3.

## Product Images

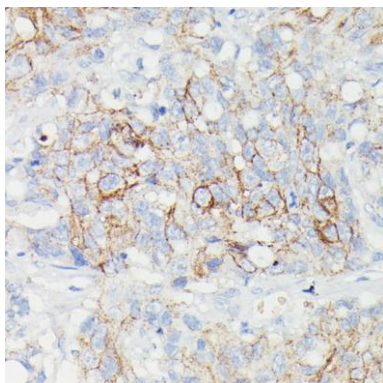
---



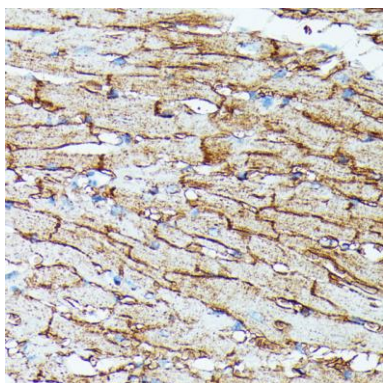
Western blot analysis of extracts of various cell lines, using SLC14A1 antibody (CAB15991) at 1:1000 dilution. Secondary antibody: HRP Goat Anti-Rabbit IgG (H+L) (CABS014) at 1:10000 dilution. Lysates/proteins: 25ug per lane. Blocking buffer: 3% nonfat dry milk in TBST. Detection: ECL Basic Kit (CABM00020). Exposure time: 60s.



Immunohistochemistry of paraffin-embedded rat heart using SLC14A1 antibody (CAB15991) at dilution of 1:100 (40x lens).



Immunohistochemistry of paraffin-embedded Human lymph node tumors using SLC14A1 antibody (CAB15991) at dilution of 1:100 (40x lens).



Immunohistochemistry of paraffin-embedded mouse heart using SLC14A1 antibody (CAB15991) at dilution of 1:100 (40x lens).