

FYB Rabbit Polyclonal Antibody



CAB15997

Product Information

Size:

20uL, 50uL, 100uL, 200uL

Observed MW:

120KDa

Calculated MW:

85kDa/90kDa/91kDa

Applications:

WB

Reactivity:

Human, Mouse

Protein Background

The protein encoded by this gene is an adapter for the FYN protein and LCP2 signaling cascades in T-cells. The encoded protein is involved in platelet activation and controls the expression of interleukin-2. Three transcript variants encoding different isoforms have been found for this gene.

Immunogen information

Gene ID:

2533

Uniprot

O15117

Synonyms:

FYB; ADAP; PRO0823; SLAP-130; SLAP130; THC3

Antibody Information

Recommended dilutions:

WB 1:500 - 1:2000

Source:

Rabbit

Isotype:

IgG

Purification:

Affinity purification

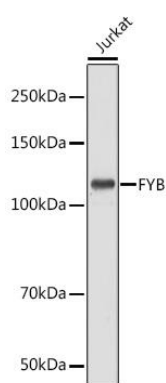
Immunogen:

Recombinant fusion protein containing a sequence corresponding to amino acids 678-829 of human FYB (NP_001456.3).

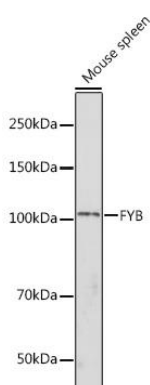
Storage:

Store at -20°C. Avoid freeze / thaw cycles. Buffer: PBS with 0.02% sodium azide, 50% glycerol, pH7.3.

Product Images



Western blot analysis of extracts of Jurkat cells, using FYB antibody (CAB15997) at 1:1000 dilution. Secondary antibody: HRP Goat Anti-Rabbit IgG (H+L) (CABS014) at 1:10000 dilution. Lysates/proteins: 25ug per lane. Blocking buffer: 3% nonfat dry milk in TBST. Detection: ECL Basic Kit (CABM00020). Exposure time: 10s.



Western blot analysis of extracts of Mouse spleen, using FYB antibody (CAB15997) at 1:1000 dilution. Secondary antibody: HRP Goat Anti-Rabbit IgG (H+L) (CABS014) at 1:10000 dilution. Lysates/proteins: 25ug per lane. Blocking buffer: 3% nonfat dry milk in TBST. Detection: ECL Basic Kit (CABM00020). Exposure time: 180s.