

# NUSAP1 Rabbit Polyclonal Antibody



**CAB16000**

---

## Product Information

### Size:

20uL, 50uL, 100uL, 200uL

### Observed MW:

49kDa

### Calculated MW:

42kDa/47kDa/49kDa

### Applications:

WB

### Reactivity:

Human, Mouse

## Antibody Information

### Recommended dilutions:

WB 1:500 - 1:2000

### Source:

Rabbit

### Isotype:

IgG

### Purification:

Affinity purification

## Protein Background

NUSAP1 is a nucleolar-spindle-associated protein that plays a role in spindle microtubule organization (Raemaekers et al., 2003 [PubMed 12963707]).

## Immunogen information

### Gene ID:

51203

### Uniprot

Q9BXS6

### Synonyms:

NUSAP1; ANKT; BM037; LNP; NUSAP; PRO0310p1; Q0310; SAPL

### Immunogen:

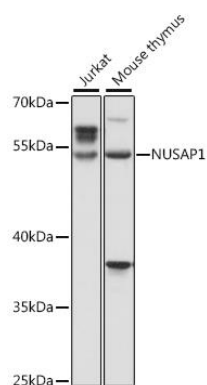
Recombinant fusion protein containing a sequence corresponding to amino acids 1-61 of human NUSAP1 (NP\_060924.4).

### Storage:

Store at -20°C. Avoid freeze / thaw cycles. Buffer: PBS with 0.02% sodium azide, 50% glycerol, pH7.3.

## Product Images

---



Western blot analysis of extracts of various cell lines, using NUSAP1 antibody (CAB16000) at 1:1000 dilution. Secondary antibody: HRP Goat Anti-Rabbit IgG (H+L) (CABS014) at 1:10000 dilution. Lysates/proteins: 25ug per lane. Blocking buffer: 3% nonfat dry milk in TBST. Detection: ECL Basic Kit (CABM00020). Exposure time: 60s.