

# Zip12 Rabbit Polyclonal Antibody



CAB16006

## Product Information

### Size:

20uL, 50uL, 100uL, 200uL

### Observed MW:

77kDa

### Calculated MW:

45kDa/61kDa/72kDa/76kDa

### Applications:

WB IHC

### Reactivity:

Human, Mouse, Rat

## Protein Background

Zinc is an essential cofactor for hundreds of enzymes. It is involved in protein, nucleic acid, carbohydrate, and lipid metabolism, as well as in the control of gene transcription, growth, development, and differentiation. SLC39A12 belongs to a subfamily of proteins that show structural characteristics of zinc transporters (Taylor and Nicholson, 2003 [PubMed 12659941]).

## Immunogen information

### Gene ID:

221074

### Uniprot

Q504Y0

### Synonyms:

SLC39A12; LZT-Hs8; ZIP-12; bA570F3.1; Zip12

## Antibody Information

### Recommended dilutions:

WB 1:500 - 1:2000 IHC 1:50  
- 1:200

### Source:

Rabbit

### Isotype:

IgG

### Purification:

Affinity purification

### Immunogen:

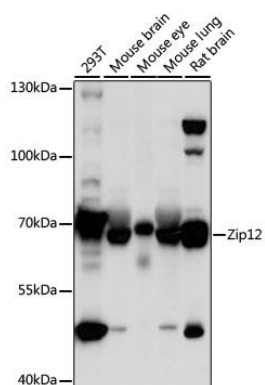
A synthetic peptide corresponding to a sequence within amino acids 1-100 of human SLC39A12 (NP\_001138667.1).

### Storage:

Store at -20°C. Avoid freeze / thaw cycles. Buffer: PBS with 0.02% sodium azide, 50% glycerol, pH7.3.

## Product Images

---



Western blot analysis of extracts of various cell lines, using Zip12 antibody (CAB16006) at 1:1000 dilution. Secondary antibody: HRP Goat Anti-Rabbit IgG (H+L) (CABS014) at 1:10000 dilution. Lysates/proteins: 25ug per lane. Blocking buffer: 3% nonfat dry milk in TBST. Detection: ECL Basic Kit (CABM00020). Exposure time: 1s.