

TSC2 Rabbit Polyclonal Antibody



CAB16007

Product Information

Size:

20uL, 50uL, 100uL, 200uL

Observed MW:

Calculated MW:

25kDa/187-200kDa

Applications:

IF

Reactivity:

Human, Mouse, Rat

Antibody Information

Recommended dilutions:

IF 1:50 - 1:100

Source:

Rabbit

Isotype:

IgG

Purification:

Affinity purification

Protein Background

Mutations in this gene lead to tuberous sclerosis complex. Its gene product is believed to be a tumor suppressor and is able to stimulate specific GTPases. The protein associates with hamartin in a cytosolic complex, possibly acting as a chaperone for hamartin. Alternative splicing results in multiple transcript variants encoding different isoforms.

Immunogen information

Gene ID:

7249

Uniprot

P49815

Synonyms:

LAM; PPP1R160; TSC4; TSC2; Tuberin; tuberin

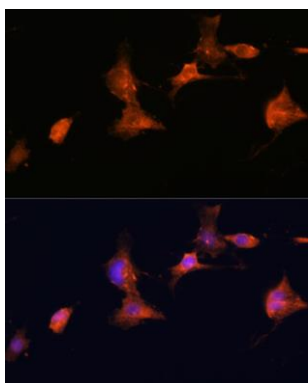
Immunogen:

Recombinant fusion protein containing a sequence corresponding to amino acids 900-1150 of human TSC2 (NP_000539.2).

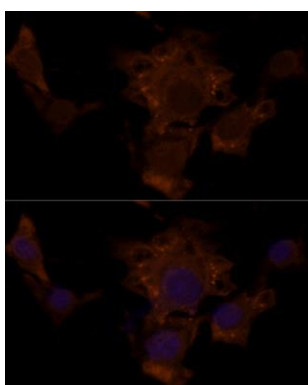
Storage:

Store at -20°C. Avoid freeze / thaw cycles. Buffer: PBS with 0.02% sodium azide, 50% glycerol, pH7.3.

Product Images



Immunofluorescence analysis of C6 cells using TSC2 antibody (CAB16007) at dilution of 1:100. Blue: DAPI for nuclear staining.



Immunofluorescence analysis of NIH/3T3 cells using TSC2 antibody (CAB16007) at dilution of 1:100. Blue: DAPI for nuclear staining.