

MonoMethyl-UHRF1-K385 Rabbit Polyclonal Antibody

CAB16008



Product Information

Size:

20uL, 50uL, 100uL, 200uL

Observed MW:

91kDa

Calculated MW:

89kDa/91kDa

Applications:

WB IHC IF DB

Reactivity:

Human, Mouse, Rat

Antibody Information

Recommended dilutions:

DB 1:500 - 1:2000 WB
1:500 - 1:2000 IHC 1:50 -
1:200 IF 1:50 - 1:200

Source:

Rabbit

Isotype:

IgG

Purification:

Affinity purification

Protein Background

This gene encodes a member of a subfamily of RING-finger type E3 ubiquitin ligases. The protein binds to specific DNA sequences, and recruits a histone deacetylase to regulate gene expression. Its expression peaks at late G1 phase and continues during G2 and M phases of the cell cycle. It plays a major role in the G1/S transition by regulating topoisomerase IIalpha and retinoblastoma gene expression, and functions in the p53-dependent DNA damage checkpoint. It is regarded as a hub protein for the integration of epigenetic information. This gene is up-regulated in various cancers, and it is therefore considered to be a therapeutic target. Multiple transcript variants encoding different isoforms have been found for this gene. A related pseudogene exists on chromosome 12.

Immunogen information

Gene ID:

29128

Uniprot

Q96T88

Synonyms:

UHRF1; ICBP90; Np95; RNF106; TDRD22; hNP95; hUHRF1; huNp95

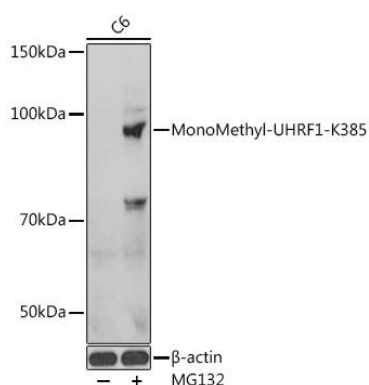
Immunogen:

A synthetic monomethylated peptide around K385 of human UHRF1 (NP_001041666.1).

Storage:

Store at -20°C. Avoid freeze / thaw cycles. Buffer: PBS with 0.02% sodium azide, 50% glycerol, pH7.3.

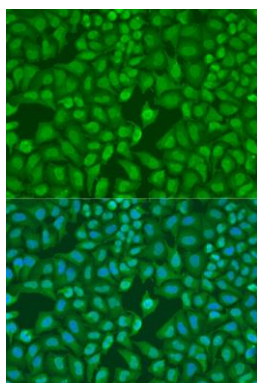
Product Images



Western blot analysis of extracts of C6 cells, using MonoMethyl-UHRF1-K385 antibody (CAB16008) at 1:1000 dilution. C6 cells were treated by MG132 (50 μ M) at 37°C for 90 minutes. Secondary antibody: HRP Goat Anti-Rabbit IgG (H+L) (CABS014) at 1:10000 dilution. Lysates/proteins: 25 μ g per lane. Blocking buffer: 3% BSA. Detection: ECL Basic Kit (CABM00020). Exposure time: 1s.

Dot-blot analysis of all sorts of methylation peptides using MonoMethyl-UHRF1-K385 antibody (CAB16008) at 1:1000 dilution.

MonoMethyl-UHRF1-K38



Immunofluorescence analysis of U2OS cells using MonoMethyl-UHRF1-K385 antibody (CAB16008) at dilution of 1:100. Blue: DAPI for nuclear staining.