

PLEKHA1 Rabbit Polyclonal Antibody



CAB16009

Product Information

Size:

20uL, 50uL, 100uL, 200uL

Observed MW:

Calculated MW:

38kDa/45kDa

Applications:

IF

Reactivity:

Human

Antibody Information

Recommended dilutions:

IF 1:50 - 1:200

Source:

Rabbit

Isotype:

IgG

Purification:

Affinity purification

Protein Background

This gene encodes a pleckstrin homology domain-containing adapter protein. The encoded protein is localized to the plasma membrane where it specifically binds phosphatidylinositol 3, 4-bisphosphate. This protein may be involved in the formation of signaling complexes in the plasma membrane. Polymorphisms in this gene are associated with age-related macular degeneration. Alternate splicing results in multiple transcript variants. A pseudogene of this gene is found on chromosome 5.

Immunogen information

Gene ID:

59338

Uniprot

Q9HB21

Synonyms:

PLEKHA1; TAPP1

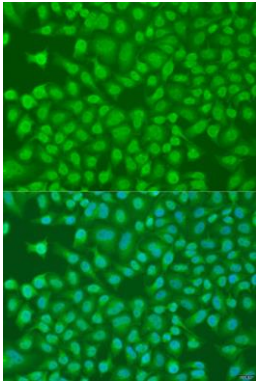
Immunogen:

Recombinant fusion protein containing a sequence corresponding to amino acids 285-404 of human PLEKHA1 (NP_067635.2).

Storage:

Store at -20°C. Avoid freeze / thaw cycles. Buffer: PBS with 0.02% sodium azide, 50% glycerol, pH7.3.

Product Images



Immunofluorescence analysis of U2OS cells using PLEKHA1 antibody (CAB16009) at dilution of 1:100. Blue: DAPI for nuclear staining.