

Hepcidin Rabbit Polyclonal Antibody



CAB1601

Product Information

Size:

20uL, 50uL, 100uL, 200uL

Observed MW:

10kDa

Calculated MW:

9kDa

Applications:

WB

Reactivity:

Human, Mouse

Antibody Information

Recommended dilutions:

WB 1:500 - 1:2000

Source:

Rabbit

Isotype:

IgG

Purification:

Affinity purification

Protein Background

The product encoded by this gene is involved in the maintenance of iron homeostasis, and it is necessary for the regulation of iron storage in macrophages, and for intestinal iron absorption. The preproprotein is post-translationally cleaved into mature peptides of 20, 22 and 25 amino acids, and these active peptides are rich in cysteines, which form intramolecular bonds that stabilize their beta-sheet structures. These peptides exhibit antimicrobial activity against bacteria and fungi. Mutations in this gene cause hemochromatosis type 2B, also known as juvenile hemochromatosis, a disease caused by severe iron overload that results in cardiomyopathy, cirrhosis, and endocrine failure.

Immunogen information

Gene ID:

57817

Uniprot

P81172

Synonyms:

HAMP; HEPC; HFE2B; LEAP1; PLTR; hepcidin

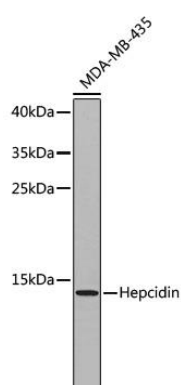
Immunogen:

Recombinant fusion protein containing a sequence corresponding to amino acids 1-84 of human Hepcidin (NP_066998.1).

Storage:

Store at -20°C. Avoid freeze / thaw cycles. Buffer: PBS with 0.02% sodium azide, 50% glycerol, pH7.3.

Product Images



Western blot analysis of extracts of MDA-MB-435 cells, using Hepcidin antibody (CAB1601). Secondary antibody: HRP Goat Anti-Rabbit IgG (H+L) (CABS014) at 1:10000 dilution. Lysates/proteins: 25ug per lane. Blocking buffer: 3% nonfat dry milk in TBST.