

SH2D1B Rabbit Polyclonal Antibody



CAB16010

Product Information

Size:

20uL, 50uL, 100uL, 200uL

Observed MW:

Calculated MW:

9kDa/15kDa

Applications:

IF

Reactivity:

Human

Antibody Information

Recommended dilutions:

IF 1:50 - 1:200

Source:

Rabbit

Isotype:

IgG

Purification:

Affinity purification

Protein Background

Immunogen information

Gene ID:

117157

Uniprot

O14796

Synonyms:

SH2D1B; EAT2

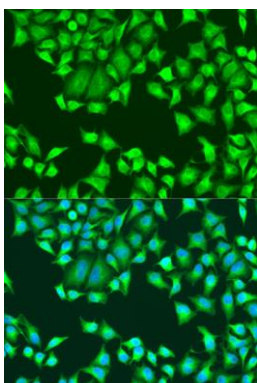
Immunogen:

Recombinant fusion protein containing a sequence corresponding to amino acids 1-132 of human SH2D1B (NP_444512.2).

Storage:

Store at -20°C. Avoid freeze / thaw cycles. Buffer: PBS with 0.02% sodium azide, 50% glycerol, pH7.3.

Product Images



Immunofluorescence analysis of U2OS cells using SH2D1B antibody (CAB16010) at dilution of 1:100. Blue: DAPI for nuclear staining.