

HNRNPCL1 Rabbit Polyclonal Antibody



CAB16011

Product Information

Size:

20uL, 50uL, 100uL, 200uL

Observed MW:

43KDa

Calculated MW:

32kDa

Applications:

WB IF

Reactivity:

Human

Antibody Information

Recommended dilutions:

WB 1:500 - 1:2000 IF 1:50 - 1:200

Source:

Rabbit

Isotype:

IgG

Purification:

Affinity purification

Protein Background

Immunogen information

Gene ID:

343069

Uniprot

O60812

Synonyms:

HNRNPCL1; HNRPCL1

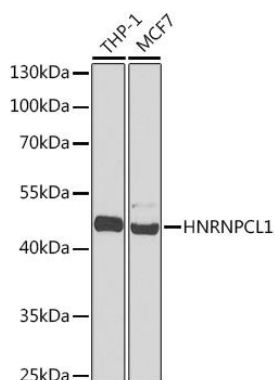
Immunogen:

A synthetic peptide corresponding to a sequence within amino acids 200 to the C-terminus of human HNRNPCL1 (NP_001013653.1).

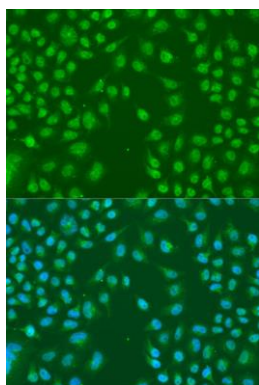
Storage:

Store at -20°C. Avoid freeze / thaw cycles. Buffer: PBS with 0.02% sodium azide, 50% glycerol, pH7.3.

Product Images



Western blot analysis of extracts of various cell lines, using HNRNPCL1 antibody (CAB16011) at 1:1000 dilution. Secondary antibody: HRP Goat Anti-Rabbit IgG (H+L) (CABS014) at 1:10000 dilution. Lysates/proteins: 25ug per lane. Blocking buffer: 3% nonfat dry milk in TBST. Detection: ECL Basic Kit (CABM00020). Exposure time: 90s.



Immunofluorescence analysis of U2OS cells using HNRNPCL1 antibody (CAB16011) at dilution of 1:100. Blue: DAPI for nuclear staining.