

ODF1 Rabbit Polyclonal Antibody



CAB16023

Product Information

Size:

20uL, 50uL, 100uL, 200uL

Observed MW:

28kDa

Calculated MW:

28kDa

Applications:

WB

Reactivity:

Human, Mouse, Rat

Antibody Information

Recommended dilutions:

WB 1:500 - 1:2000

Source:

Rabbit

Isotype:

IgG

Purification:

Affinity purification

Protein Background

The outer dense fibers are cytoskeletal structures that surround the axoneme in the middle piece and principal piece of the sperm tail. The fibers function in maintaining the elastic structure and recoil of the sperm tail as well as in protecting the tail from shear forces during epididymal transport and ejaculation. Defects in the outer dense fibers lead to abnormal sperm morphology and infertility. The human outer dense fibers contains at least 10 major proteins and this gene encodes the main protein.

Immunogen information

Gene ID:

4956

Uniprot

Q14990

Synonyms:

ODF1; CT133; HSPB10; ODF; ODF2; ODF27; ODFP; ODFPG;
ODFPGA; ODFPGB; RT7; SODF

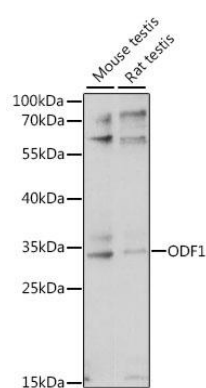
Immunogen:

Recombinant fusion protein containing a sequence corresponding to amino acids 80-180 of human ODF1 (NP_077721.2).

Storage:

Store at -20°C. Avoid freeze / thaw cycles. Buffer: PBS with 0.02% sodium azide, 50% glycerol, pH7.3.

Product Images



Western blot analysis of extracts of various cell lines, using ODF1 antibody (CAB16023) at 1:1000 dilution. Secondary antibody: HRP Goat Anti-Rabbit IgG (H+L) (CABS014) at 1:10000 dilution. Lysates/proteins: 25ug per lane. Blocking buffer: 3% nonfat dry milk in TBST. Detection: ECL Basic Kit (CABM00020). Exposure time: 30s.