

ZNRF3 Rabbit Polyclonal Antibody



CAB16026

Product Information

Size:

20uL, 50uL, 100uL, 200uL

Observed MW:

120kDa

Calculated MW:

100kDa

Applications:

WB IHC

Reactivity:

Human, Mouse, Rat

Antibody Information

Recommended dilutions:

WB 1:500 - 1:2000 IHC 1:50
- 1:200

Source:

Rabbit

Isotype:

IgG

Purification:

Affinity purification

Protein Background

Immunogen information

Gene ID:

84133

Uniprot

Q9ULT6

Synonyms:

ZNRF3; BK747E2.3; RNF203

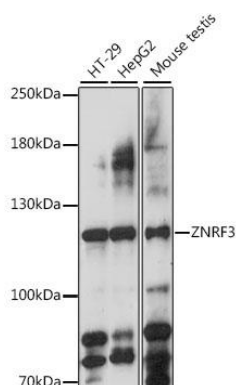
Immunogen:

A synthetic peptide corresponding to a sequence within amino acids 1-100 of human ZNRF3 (NP_115549.2).

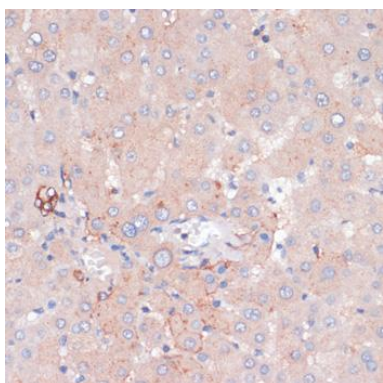
Storage:

Store at -20°C. Avoid freeze / thaw cycles. Buffer: PBS with 0.02% sodium azide, 50% glycerol, pH7.3.

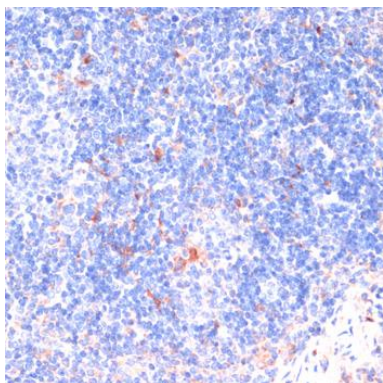
Product Images



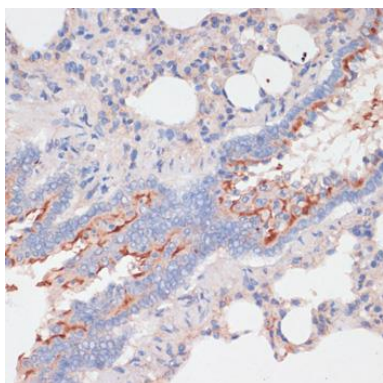
Western blot analysis of extracts of various cell lines, using ZNRF3 antibody (CAB16026) at 1:1000 dilution. Secondary antibody: HRP Goat Anti-Rabbit IgG (H+L) (CABS014) at 1:10000 dilution. Lysates/proteins: 25ug per lane. Blocking buffer: 3% nonfat dry milk in TBST. Detection: ECL Enhanced Kit (CABM00021). Exposure time: 90s.



Immunohistochemistry of paraffin-embedded human liver using ZNRF3 antibody (CAB16026) at dilution of 1:100 (40x lens).



Immunohistochemistry of paraffin-embedded mouse spleen using ZNRF3 antibody (CAB16026) at dilution of 1:100 (40x lens).



Immunohistochemistry of paraffin-embedded rat lung using ZNRF3 antibody (CAB16026) at dilution of 1:100 (40x lens).