

CACNB2 Rabbit Polyclonal Antibody



CAB16037

Product Information

Size:

20uL, 50uL, 100uL, 200uL

Observed MW:

90kDa

Calculated MW:

64kDa/65kDa/68kDa/69kDa/
70kDa/71kDa/73kDa

Applications:

WB IHC

Reactivity:

Human, Mouse, Rat

Protein Background

This gene encodes a subunit of a voltage-dependent calcium channel protein that is a member of the voltage-gated calcium channel superfamily. The gene product was originally identified as an antigen target in Lambert-Eaton myasthenic syndrome, an autoimmune disorder. Mutations in this gene are associated with Brugada syndrome. Alternatively spliced variants encoding different isoforms have been described.

Immunogen information

Gene ID:

783

Uniprot

Q08289

Synonyms:

CACNB2; CACNLB2; CAVB2; MYSB

Antibody Information

Recommended dilutions:

WB 1:500 - 1:2000 IHC
1:100 - 1:200

Source:

Rabbit

Isotype:

IgG

Purification:

Affinity purification

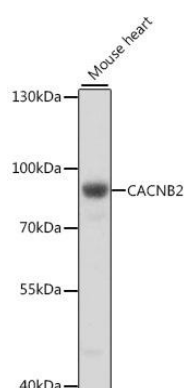
Immunogen:

Recombinant fusion protein containing a sequence corresponding to amino acids 481-660 of human CACNB2 (NP_963890.2).

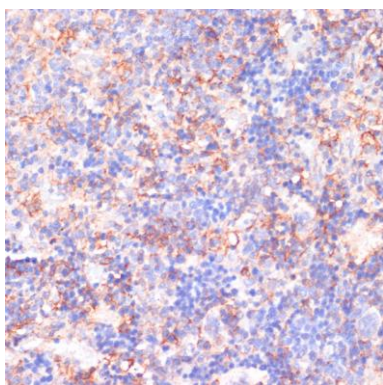
Storage:

Store at -20°C. Avoid freeze / thaw cycles. Buffer: PBS with 0.02% sodium azide, 50% glycerol, pH7.3.

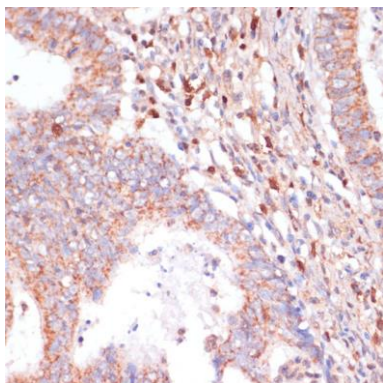
Product Images



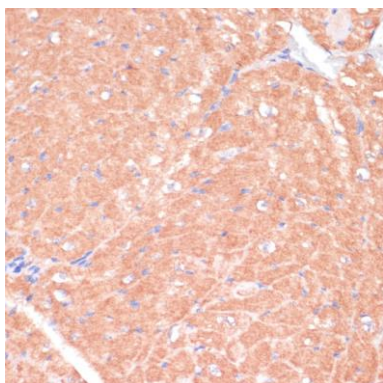
Western blot analysis of extracts of mouse heart, using CACNB2 antibody (CAB16037) at 1:1000 dilution. Secondary antibody: HRP Goat Anti-Rabbit IgG (H+L) (CABS014) at 1:10000 dilution. Lysates/proteins: 25ug per lane. Blocking buffer: 3% nonfat dry milk in TBST. Detection: ECL Basic Kit (CABM00020). Exposure time: 15s.



Immunohistochemistry of paraffin-embedded rat spleen using CACNB2 antibody (CAB16037) at dilution of 1:100 (40x lens).



Immunohistochemistry of paraffin-embedded human colon carcinoma using CACNB2 antibody (CAB16037) at dilution of 1:100 (40x lens).



Immunohistochemistry of paraffin-embedded mouse heart using CACNB2 antibody (CAB16037) at dilution of 1:100 (40x lens).