

# Cyclin B1 Rabbit Polyclonal Antibody



**CAB16038**

---

## Product Information

### Size:

20uL, 50uL, 100uL, 200uL

### Observed MW:

55kDa

### Calculated MW:

44kDa/48kDa

### Applications:

WB, IHC, IF, IP

### Reactivity:

Human, Mouse, Rat

### Category:

Polyclonal Antibodies

## Antibody Information

### Recommended dilutions:

WB 1:500 - 1:2000

IHC 1:50 - 1:200

IF 1:50 - 1:200

IP 1:50 - 1:100

### Source:

Rabbit

### Isotype:

IgG

### Purification:

Affinity purification

## Protein Background

The protein encoded by this gene is a regulatory protein involved in mitosis. The gene product complexes with p34(cdc2) to form the maturation-promoting factor (MPF). Two alternative transcripts have been found, a constitutively expressed transcript and a cell cycle-regulated transcript, that is expressed predominantly during G2/M phase. The different transcripts result from the use of alternate transcription initiation sites.

## Immunogen information

### Gene ID:

891

### Uniprot

P14635

### Synonyms:

CCNB; CCNB1; Cyclin B1; cyclin B1

### Immunogen:

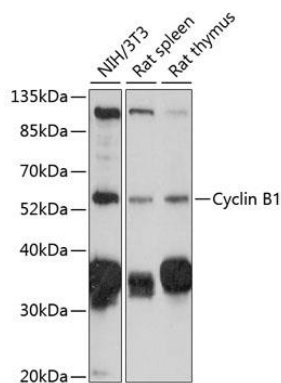
A synthetic peptide corresponding to a sequence within amino acids 330 to the C-terminus of human Cyclin B1 (NP\_114172.1).

### Storage:

Store at -20°C. Avoid freeze / thaw cycles.

Buffer: PBS with 0.02% sodium azide, 50% glycerol, pH7.3.

## Product Images



Western blot analysis of extracts of various cell lines, using Cyclin B1 antibody (CAB16038) at 1:1000 dilution.

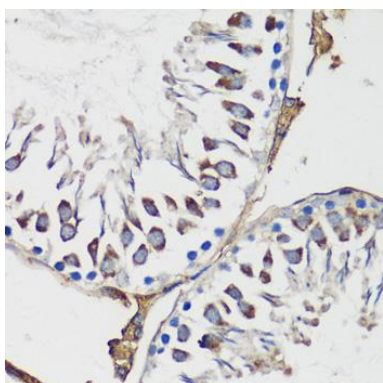
Secondary antibody: HRP Goat Anti-Rabbit IgG (H+L) (CABS014) at 1:10000 dilution.

Lysates/proteins: 25ug per lane.

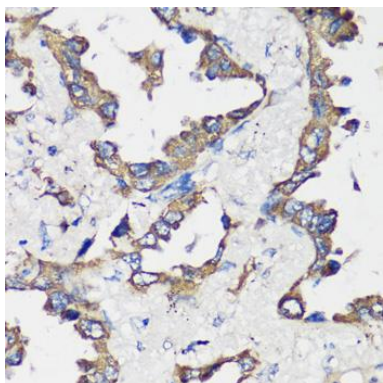
Blocking buffer: 3% non-fat dry milk in TBST.

Detection: ECL Basic Kit (AbGn00020).

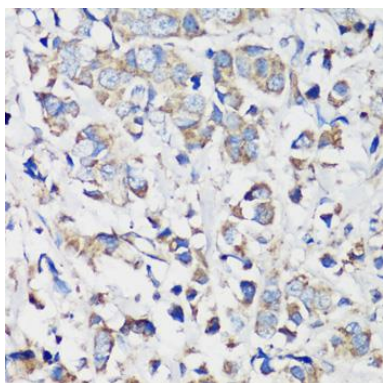
Exposure time: 30s.



Immunohistochemistry of paraffin-embedded rat testis using Cyclin B1 antibody (CAB16038) at dilution of 1:100 (40x lens).



Immunohistochemistry of paraffin-embedded human lung cancer using Cyclin B1 antibody (CAB16038) at dilution of 1:100 (40x lens).



Immunohistochemistry of paraffin-embedded human breast cancer using Cyclin B1 antibody (CAB16038) at dilution of 1:100 (40x lens).