

CD80 Rabbit Polyclonal Antibody



CAB16039

Product Information

Size:

20uL, 50uL, 100uL, 200uL

Observed MW:

50-75KDa

Calculated MW:

18kDa/29kDa/33kDa

Applications:

WB IHC IF

Reactivity:

Human, Mouse, Rat

Protein Background

The protein encoded by this gene is a membrane receptor that is activated by the binding of CD28 or CTLA-4. The activated protein induces T-cell proliferation and cytokine production. This protein can act as a receptor for adenovirus subgroup B and may play a role in lupus neuropathy.

Immunogen information

Gene ID:

941

Uniprot

P33681

Synonyms:

B7; B7-1; B7.1; BB1; CD28LG; CD28LG1; LAB7; CD80

Antibody Information

Recommended dilutions:

WB 1:500 - 1:2000 IHC 1:50
- 1:200 IF 1:50 - 1:200

Source:

Rabbit

Isotype:

IgG

Purification:

Affinity purification

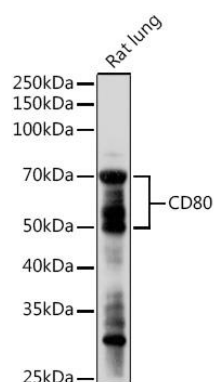
Immunogen:

A synthetic peptide corresponding to a sequence within amino acids 1-100 of human CD80 (NP_005182.1).

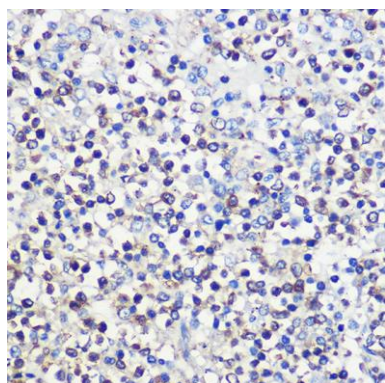
Storage:

Store at -20°C. Avoid freeze / thaw cycles. Buffer: PBS with 0.02% sodium azide, 50% glycerol, pH7.3.

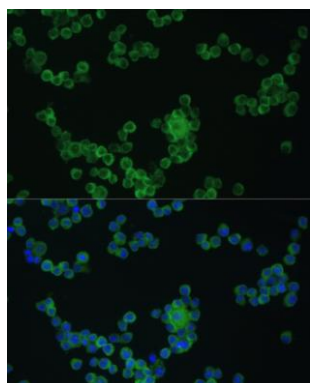
Product Images



Western blot analysis of extracts of Rat lung, using CD80 antibody (CAB16039) at 1:1000 dilution. Secondary antibody: HRP Goat Anti-Rabbit IgG (H+L) (CABS014) at 1:10000 dilution. Lysates/proteins: 25ug per lane. Blocking buffer: 3% nonfat dry milk in TBST. Detection: ECL Enhanced Kit (CABM00021). Exposure time: 180s.



Immunohistochemistry of paraffin-embedded human spleen using CD80 Rabbit pAb (CAB16039) at dilution of 1:100 (40x lens).



Immunofluorescence analysis of Raw264.7 cells using CD80 antibody (CAB16039) at dilution of 1:100. Blue: DAPI for nuclear staining.