

GP1BA Rabbit Polyclonal Antibody



CAB16048

Product Information

Size:

20uL, 50uL, 100uL, 200uL

Observed MW:

Refer to figures

Calculated MW:

71kDa

Applications:

IF

Reactivity:

Human

Antibody Information

Recommended dilutions:

IF 1:50 - 1:100

Source:

Rabbit

Isotype:

IgG

Purification:

Affinity purification

Protein Background

Glycoprotein Ib (GP Ib) is a platelet surface membrane glycoprotein composed of a heterodimer, an alpha chain and a beta chain, that is linked by disulfide bonds. The Gp Ib functions as a receptor for von Willebrand factor (VWF). The complete receptor complex includes noncovalent association of the alpha and beta subunits with platelet glycoprotein IX and platelet glycoprotein V. The binding of the GP Ib-IX-V complex to VWF facilitates initial platelet adhesion to vascular subendothelium after vascular injury, and also initiates signaling events within the platelet that lead to enhanced platelet activation, thrombosis, and hemostasis. This gene encodes the alpha subunit. Mutations in this gene result in Bernard-Soulier syndromes and platelet-type von Willebrand disease. The coding region of this gene is known to contain a polymorphic variable number tandem repeat (VNTR) domain that is associated with susceptibility to nonarteritic anterior ischemic optic neuropathy.

Immunogen information

Gene ID:

2811

Uniprot

P07359

Synonyms:

GP1BA; BDPLT1; BDPLT3; BSS; CD42B; CD42b-alpha; DBPLT3; GP1B; GPIbA; GPIbalpha; VWDP

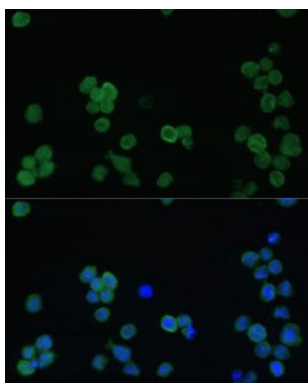
Immunogen:

Recombinant fusion protein containing a sequence corresponding to amino acids 19-259 of human GP1BA (NP_000164.5).

Storage:

Store at -20°C. Avoid freeze / thaw cycles. Buffer: PBS with 0.02% sodium azide, 50% glycerol, pH7.3.

Product Images



Immunofluorescence analysis of THP-1 cells using GP1BA Polyclonal Antibody (CAB16048) at dilution of 1:100 (40x lens). Blue: DAPI for nuclear staining.