

ERCC5 Rabbit Polyclonal Antibody



CAB1605

Product Information

Size:

20uL, 50uL, 100uL, 200uL

Observed MW:

133kDa

Calculated MW:

27kDa/47kDa/133kDa

Applications:

IF

Reactivity:

Human, Mouse, Rat

Antibody Information

Recommended dilutions:

IF 1:50 - 1:200

Source:

Rabbit

Isotype:

IgG

Purification:

Affinity purification

Protein Background

This gene encodes a single-strand specific DNA endonuclease that makes the 3' incision in DNA excision repair following UV-induced damage. The protein may also function in other cellular processes, including RNA polymerase II transcription, and transcription-coupled DNA repair. Mutations in this gene cause xeroderma pigmentosum complementation group G (XP-G), which is also referred to as xeroderma pigmentosum VII (XP7), a skin disorder characterized by hypersensitivity to UV light and increased susceptibility for skin cancer development following UV exposure. Some patients also develop Cockayne syndrome, which is characterized by severe growth defects, mental retardation, and cachexia. Read-through transcription exists between this gene and the neighboring upstream BIVM (basic, immunoglobulin-like variable motif containing) gene.

Immunogen information

Gene ID:

2073

Uniprot

P28715

Synonyms:

ERCC5; COFS3; ERCC5-201; ERCM2; UVDR; XPG; XPGC

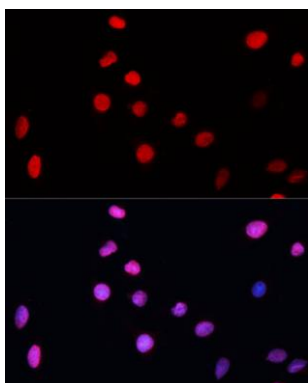
Immunogen:

Recombinant fusion protein containing a sequence corresponding to amino acids 1-270 of human ERCC5 (NP_000114.2).

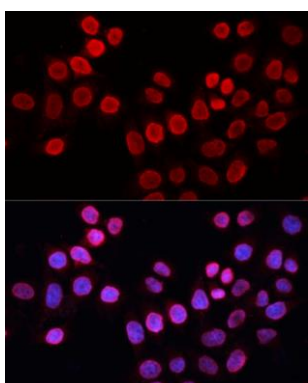
Storage:

Store at -20°C. Avoid freeze / thaw cycles. Buffer: PBS with 0.02% sodium azide, 50% glycerol, pH7.3.

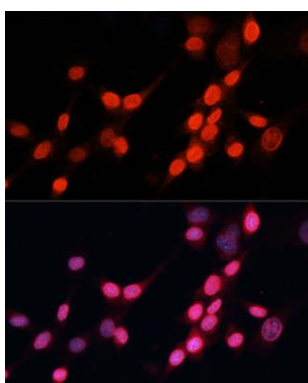
Product Images



Immunofluorescence analysis of C6 cells using ERCC5 Polyclonal Antibody (CAB1605) at dilution of 1:100 (40x lens). Blue: DAPI for nuclear staining.



Immunofluorescence analysis of HeLa cells using ERCC5 Polyclonal Antibody (CAB1605) at dilution of 1:100 (40x lens). Blue: DAPI for nuclear staining.



Immunofluorescence analysis of NIH-3T3 cells using ERCC5 Polyclonal Antibody (CAB1605) at dilution of 1:100 (40x lens). Blue: DAPI for nuclear staining.