

# ITGA1 Rabbit Polyclonal Antibody



CAB16054

---

## Product Information

### Size:

20uL, 50uL, 100uL, 200uL

### Observed MW:

200kDa

### Calculated MW:

130kDa

### Applications:

WB

### Reactivity:

Mouse, Rat

## Protein Background

This gene encodes the alpha 1 subunit of integrin receptors. This protein heterodimerizes with the beta 1 subunit to form a cell-surface receptor for collagen and laminin. The heterodimeric receptor is involved in cell-cell adhesion and may play a role in inflammation and fibrosis. The alpha 1 subunit contains an inserted (I) von Willebrand factor type I domain which is thought to be involved in collagen binding.

## Immunogen information

### Gene ID:

3672

### Uniprot

P56199

### Synonyms:

ITGA1; CD49a; VLA1

## Antibody Information

### Recommended dilutions:

WB 1:500 - 1:2000

### Source:

Rabbit

### Isotype:

IgG

### Purification:

Affinity purification

### Immunogen:

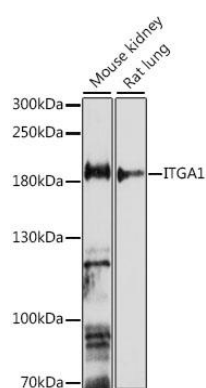
A synthetic peptide corresponding to a sequence within amino acids 700-800 of human ITGA1 (NP\_852478.1).

### Storage:

Store at -20°C. Avoid freeze / thaw cycles. Buffer: PBS with 0.02% sodium azide, 50% glycerol, pH7.3.

## Product Images

---



Western blot analysis of extracts of various cell lines, using ITGA1 antibody (CAB16054) at 1:1000 dilution. Secondary antibody: HRP Goat Anti-Rabbit IgG (H+L) (CABS014) at 1:10000 dilution. Lysates/proteins: 25ug per lane. Blocking buffer: 3% nonfat dry milk in TBST. Detection: ECL Enhanced Kit (CABM00021). Exposure time: 5min.