

PLXNB3 Rabbit Polyclonal Antibody



CAB16064

Product Information

Size:

20uL, 50uL, 100uL, 200uL

Observed MW:

170kDa

Calculated MW:

206kDa/209kDa

Applications:

WB

Reactivity:

Mouse

Protein Background

The protein encoded by this gene is a member of the plexin family. It functions as a receptor for semaphorin 5A, and plays a role in axon guidance, invasive growth and cell migration. Alternatively spliced transcript variants encoding different isoforms have been found for this gene.

Immunogen information

Gene ID:

5365

Uniprot

Q9ULL4

Synonyms:

PLXNB3; PLEXB3; PLEXR; PLXN6; plexin-B3

Antibody Information

Recommended dilutions:

WB 1:500 - 1:2000

Source:

Rabbit

Isotype:

IgG

Purification:

Affinity purification

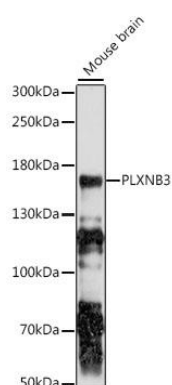
Immunogen:

Recombinant fusion protein containing a sequence corresponding to amino acids 1050-1250 of human PLXNB3 (NP_001156729.1).

Storage:

Store at -20°C. Avoid freeze / thaw cycles. Buffer: PBS with 0.02% sodium azide, 50% glycerol, pH7.3.

Product Images



Western blot analysis of extracts of mouse brain, using PLXNB3 antibody (CAB16064) at 1:1000 dilution. Secondary antibody: HRP Goat Anti-Rabbit IgG (H+L) (CABS014) at 1:10000 dilution. Lysates/proteins: 25ug per lane. Blocking buffer: 3% nonfat dry milk in TBST. Detection: ECL Basic Kit (CABM00020). Exposure time: 5s.