

SLC18A3 Rabbit Polyclonal Antibody



CAB16068

Product Information

Size:

20uL, 50uL, 100uL, 200uL

Observed MW:

65KDa

Calculated MW:

56kDa

Applications:

WB IHC IF

Reactivity:

Human, Mouse, Rat

Protein Background

This gene is a member of the vesicular amine transporter family. The encoded transmembrane protein transports acetylcholine into secretory vesicles for release into the extracellular space. Acetylcholine transport utilizes a proton gradient established by a vacuolar ATPase. This gene is located within the first intron of the choline acetyltransferase gene.

Immunogen information

Gene ID:

6572

Uniprot

Q16572

Synonyms:

SLC18A3; CMS21; VACHT

Antibody Information

Recommended dilutions:

WB 1:500 - 1:2000 IHC 1:50
- 1:200 IF 1:50 - 1:200

Source:

Rabbit

Isotype:

IgG

Purification:

Affinity purification

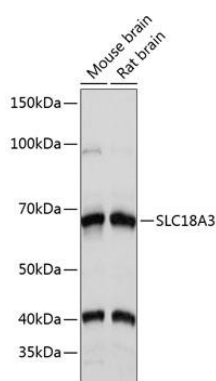
Immunogen:

Recombinant fusion protein containing a sequence corresponding to amino acids 1-150 of human SLC18A3 (NP_003046.2).

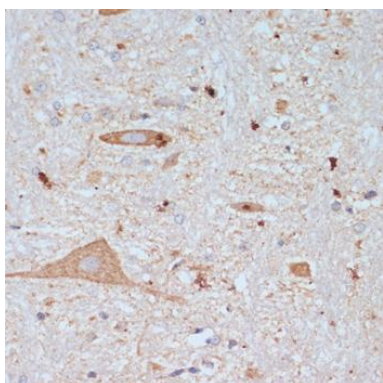
Storage:

Store at -20°C. Avoid freeze / thaw cycles. Buffer: PBS with 0.02% sodium azide, 50% glycerol, pH7.3.

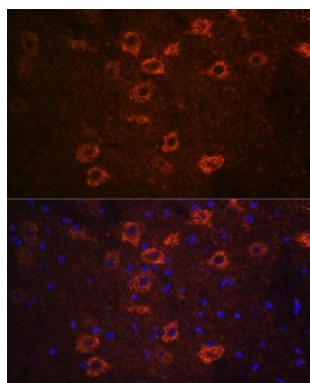
Product Images



Western blot analysis of extracts of various cell lines, using SLC18A3 Polyclonal Antibody (CAB16068) at 1:1000 dilution. Secondary antibody: HRP Goat Anti-Rabbit IgG (H+L) (CABS014) at 1:10000 dilution. Lysates/proteins: 25ug per lane. Blocking buffer: 3% nonfat dry milk in TBST. Detection: ECL Basic Kit (CABM00020). Exposure time: 30s.



Immunohistochemistry of paraffin-embedded rat brain using SLC18A3 antibody (CAB16068) at dilution of 1:200 (40x lens).



Immunofluorescence analysis of mouse brain using SLC18A3 Rabbit pAb (CAB16068) at dilution of 1:100 (40x lens). Blue: DAPI for nuclear staining.