

# CCDC6 Rabbit Polyclonal Antibody



CAB16075

## Product Information

### Size:

20uL, 50uL, 100uL, 200uL

### Observed MW:

56kDa

### Calculated MW:

53kDa

### Applications:

WB IHC IF

### Reactivity:

Human, Mouse, Rat

## Protein Background

This gene encodes a coiled-coil domain-containing protein. The encoded protein is ubiquitously expressed and may function as a tumor suppressor. A chromosomal rearrangement resulting in the expression of a fusion gene containing a portion of this gene and the intracellular kinase-encoding domain of the ret proto-oncogene is the cause of thyroid papillary carcinoma.

## Immunogen information

### Gene ID:

8030

### Uniprot

Q16204

### Synonyms:

CCDC6; D10S170; H4; PTC; TPC; TST1

## Antibody Information

### Recommended dilutions:

WB 1:500 - 1:2000 IHC 1:50  
- 1:200 IF 1:50 - 1:200

### Source:

Rabbit

### Isotype:

IgG

### Purification:

Affinity purification

### Immunogen:

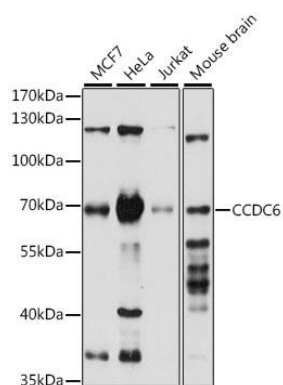
Recombinant fusion protein containing a sequence corresponding to amino acids 55-222 of human CCDC6 (NP\_005427.2).

### Storage:

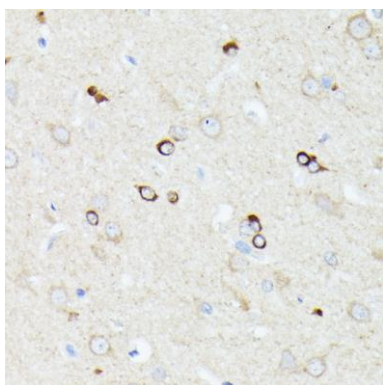
Store at -20°C. Avoid freeze / thaw cycles. Buffer: PBS with 0.02% sodium azide, 50% glycerol, pH7.3.

## Product Images

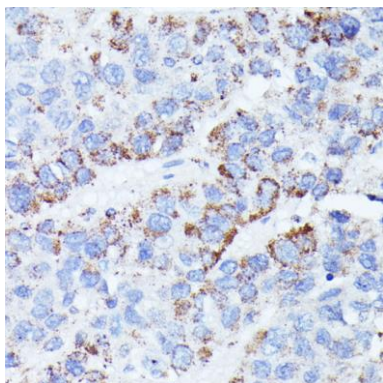
---



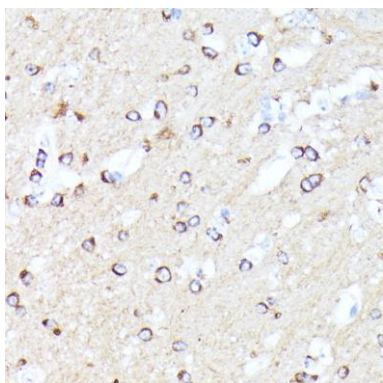
Western blot analysis of extracts of various cell lines, using CCDC6 antibody (CAB16075) at 1:1000 dilution. Secondary antibody: HRP Goat Anti-Rabbit IgG (H+L) (CABS014) at 1:10000 dilution. Lysates/proteins: 25ug per lane. Blocking buffer: 3% nonfat dry milk in TBST. Detection: ECL Basic Kit (CABM00020). Exposure time: 15s.



Immunohistochemistry of paraffin-embedded rat brain using CCDC6 antibody (CAB16075) at dilution of 1:100 (40x lens).



Immunohistochemistry of paraffin-embedded human liver cancer using CCDC6 antibody (CAB16075) at dilution of 1:100 (40x lens).



Immunohistochemistry of paraffin-embedded mouse brain using CCDC6 antibody (CAB16075) at dilution of 1:100 (40x lens).