

GPRASP1 Rabbit Polyclonal Antibody



CAB16090

Product Information

Size:

20uL, 50uL, 100uL, 200uL

Observed MW:

157kDa

Calculated MW:

156kDa

Applications:

WB IF

Reactivity:

Mouse, Rat

Protein Background

This gene encodes a member of the GPRASP (G protein-coupled receptor associated sorting protein) family. The protein may modulate lysosomal sorting and functional down-regulation of a variety of G-protein coupled receptors. It targets receptors for degradation in lysosomes. The receptors interacting with this sorting protein include D2 dopamine receptor (DRD2), delta opioid receptor (OPRD1), beta-2 adrenergic receptor (ADRB2), D4 dopamine receptor (DRD4) and cannabinoid 1 receptor (CB1R). Multiple alternatively spliced transcript variants encoding the same protein have been identified.

Immunogen information

Gene ID:

9737

Uniprot

Q5JY77

Synonyms:

GPRASP1; GASP; GASP-1; GASP1

Antibody Information

Recommended dilutions:

WB 1:500 - 1:2000 IF 1:50 - 1:200

Source:

Rabbit

Isotype:

IgG

Purification:

Affinity purification

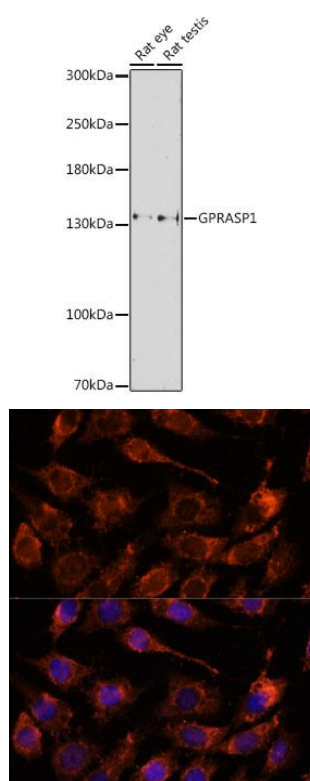
Immunogen:

Recombinant fusion protein containing a sequence corresponding to amino acids 200-500 of human GPRASP1 (NP_055525.3).

Storage:

Store at -20°C. Avoid freeze / thaw cycles. Buffer: PBS with 0.02% sodium azide, 50% glycerol, pH7.3.

Product Images



Western blot analysis of extracts of various cell lines, using GPRASP1 antibody (CAB16090) at 1:1000 dilution. Secondary antibody: HRP Goat Anti-Rabbit IgG (H+L) (CABS014) at 1:10000 dilution. Lysates/proteins: 25ug per lane. Blocking buffer: 3% nonfat dry milk in TBST. Detection: ECL Basic Kit (CABM00020). Exposure time: 90s.

Immunofluorescence analysis of L929 cells using GPRASP1 antibody (CAB16090) at dilution of 1:100. Blue: DAPI for nuclear staining.