

# SYCP2 Rabbit Polyclonal Antibody



CAB16098

---

## Product Information

### Size:

20uL, 50uL, 100uL, 200uL

### Observed MW:

176kDa

### Calculated MW:

175kDa

### Applications:

WB IF

### Reactivity:

Human, Mouse, Rat

## Protein Background

The synaptonemal complex is a proteinaceous structure that links homologous chromosomes during the prophase of meiosis. The protein encoded by this gene is a major component of the synaptonemal complex and may bind DNA at scaffold attachment regions. The encoded protein requires synaptonemal complex protein 3, but not 1, for inclusion in the synaptonemal complex.

## Immunogen information

### Gene ID:

10388

### Uniprot

Q9BX26

### Synonyms:

SYCP2; SCP-2; SCP2

## Antibody Information

### Recommended dilutions:

WB 1:500 - 1:2000 IF 1:50 - 1:200

### Source:

Rabbit

### Isotype:

IgG

### Purification:

Affinity purification

### Immunogen:

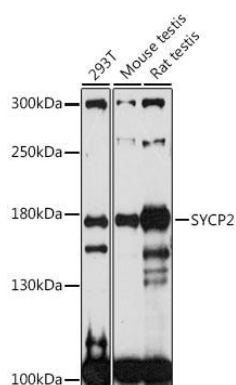
Recombinant fusion protein containing a sequence corresponding to amino acids 1231-1530 of human SYCP2 (NP\_055073.2).

### Storage:

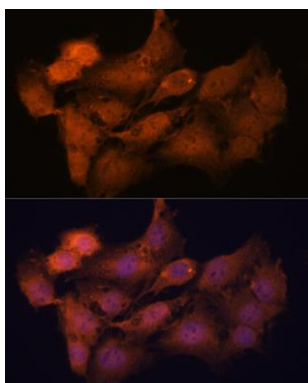
Store at -20°C. Avoid freeze / thaw cycles. Buffer: PBS with 0.02% sodium azide, 50% glycerol, pH7.3.

## Product Images

---



Western blot analysis of extracts of various cell lines, using SYCP2 antibody (CAB16098) at 1:1000 dilution. Secondary antibody: HRP Goat Anti-Rabbit IgG (H+L) (CABS014) at 1:10000 dilution. Lysates/proteins: 25ug per lane. Blocking buffer: 3% nonfat dry milk in TBST. Detection: ECL Basic Kit (CABM00020). Exposure time: 90s.



Immunofluorescence analysis of C6 cells using SYCP2 antibody (CAB16098) at dilution of 1:100. Blue: DAPI for nuclear staining.