

PRSS21 Rabbit Polyclonal Antibody



CAB16100

Product Information

Size:

20uL, 50uL, 100uL, 200uL

Observed MW:

36kDa

Calculated MW:

33kDa/34kDa

Applications:

WB

Reactivity:

Mouse, Rat

Protein Background

This gene encodes a cell-surface anchored serine protease, which is a member of the trypsin family of serine proteases. The encoded protein is predicted to be active on peptide linkages involving the carboxyl group of lysine or arginine. The encoded protein localizes to the cytoplasm and the plasma membrane of premeiotic testicular germ cells and may be involved in progression of testicular tumors of germ cell origin. Alternatively spliced transcript variants encoding multiple isoforms have been observed for this gene.

Immunogen information

Gene ID:

10942

Uniprot

Q9Y6M0

Synonyms:

PRSS21; ESP-1; ESP1; TEST1; TESTISIN; testisin

Antibody Information

Recommended dilutions:

WB 1:500 - 1:2000

Source:

Rabbit

Isotype:

IgG

Purification:

Affinity purification

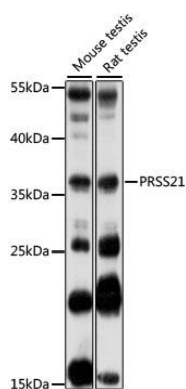
Immunogen:

Recombinant fusion protein containing a sequence corresponding to amino acids 150-220 of human PRSS21 (NP_006790.1).

Storage:

Store at -20°C. Avoid freeze / thaw cycles. Buffer: PBS with 0.02% sodium azide, 50% glycerol, pH7.3.

Product Images



Western blot analysis of extracts of various cell lines, using PRSS21 antibody (CAB16100) at 1:1000 dilution. Secondary antibody: HRP Goat Anti-Rabbit IgG (H+L) (CABS014) at 1:10000 dilution. Lysates/proteins: 25ug per lane. Blocking buffer: 3% nonfat dry milk in TBST. Detection: ECL Basic Kit (CABM00020). Exposure time: 5s.