

FBXO21 Rabbit Polyclonal Antibody



CAB16107

Product Information

Size:

20uL, 50uL, 100uL, 200uL

Observed MW:

72kDa

Calculated MW:

71kDa/72kDa

Applications:

WB IHC IF

Reactivity:

Human, Mouse, Rat

Antibody Information

Recommended dilutions:

WB 1:500 - 1:2000 IHC 1:50
- 1:200 IF 1:50 - 1:200

Source:

Rabbit

Isotype:

IgG

Purification:

Affinity purification

Protein Background

This gene encodes a member of the F-box protein family which is characterized by an approximately 40 amino acid motif, the F-box. The F-box proteins constitute one of the four subunits of ubiquitin protein ligase complex called SCFs (SKP1-cullin-F-box), which function in phosphorylation-dependent ubiquitination. The F-box proteins are divided into 3 classes: Fbws containing WD-40 domains, Fbls containing leucine-rich repeats, and Fbxs containing either different protein-protein interaction modules or no recognizable motifs. The protein encoded by this gene belongs to the Fbxs class. Alternative splicing of this gene generates 2 transcript variants.

Immunogen information

Gene ID:

23014

Uniprot

O94952

Synonyms:

FBXO21; FBX21

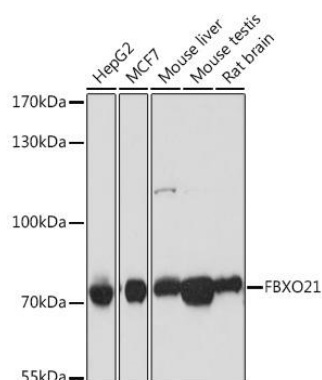
Immunogen:

Recombinant fusion protein containing a sequence corresponding to amino acids 440-621 of human FBXO21 (NP_055817.1).

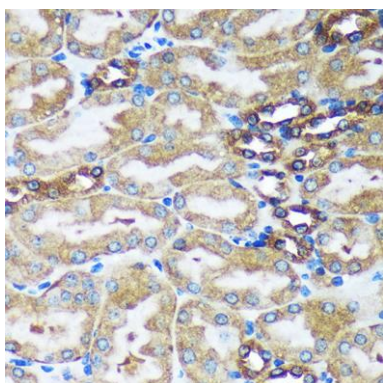
Storage:

Store at -20°C. Avoid freeze / thaw cycles. Buffer: PBS with 0.02% sodium azide, 50% glycerol, pH7.3.

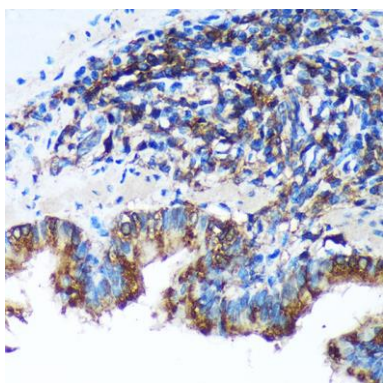
Product Images



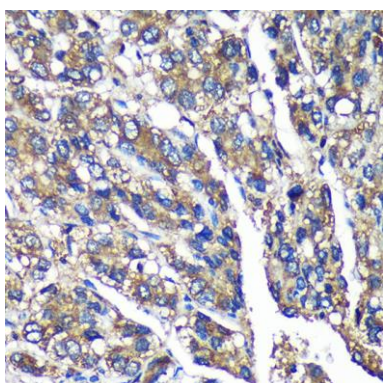
Western blot analysis of extracts of various cell lines, using FBXO21 antibody (CAB16107) at 1:1000 dilution. Secondary antibody: HRP Goat Anti-Rabbit IgG (H+L) (CABS014) at 1:10000 dilution. Lysates/proteins: 25ug per lane. Blocking buffer: 3% nonfat dry milk in TBST. Detection: ECL Basic Kit (CABM00020). Exposure time: 1s.



Immunohistochemistry of paraffin-embedded Mouse kidney using FBXO21 Rabbit pAb (CAB16107) at dilution of 1:100 (40x lens).



Immunohistochemistry of paraffin-embedded Rat lung using FBXO21 Rabbit pAb (CAB16107) at dilution of 1:100 (40x lens).



Immunohistochemistry of paraffin-embedded Human liver cancer using FBXO21 Rabbit pAb (CAB16107) at dilution of 1:100 (40x lens).