

# HEY1 Rabbit Polyclonal Antibody



CAB16110

---

## Product Information

### Size:

20uL, 50uL, 100uL, 200uL

### Observed MW:

35kDa

### Calculated MW:

32kDa/33kDa

### Applications:

WB IF

### Reactivity:

Human, Mouse, Rat

## Protein Background

This gene encodes a nuclear protein belonging to the hairy and enhancer of split-related (HESR) family of basic helix-loop-helix (bHLH)-type transcriptional repressors. Expression of this gene is induced by the Notch and c-Jun signal transduction pathways. Two similar and redundant genes in mouse are required for embryonic cardiovascular development, and are also implicated in neurogenesis and somitogenesis. Alternative splicing results in multiple transcript variants.

## Immunogen information

### Gene ID:

23462

### Uniprot

Q9Y5J3

### Synonyms:

HEY1; BHLHb31; CHF2; HERP2; HESR1; HRT-1; OAF1; hHRT1

## Antibody Information

### Recommended dilutions:

WB 1:500 - 1:2000 IF 1:50 - 1:200

### Source:

Rabbit

### Isotype:

IgG

### Purification:

Affinity purification

### Immunogen:

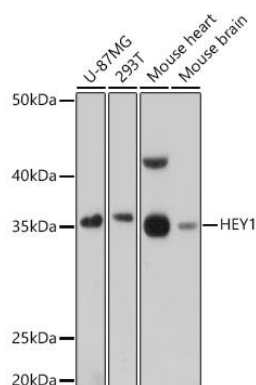
A synthetic peptide corresponding to a sequence within amino acids 50-150 of human HEY1 (NP\_001269780.1).

### Storage:

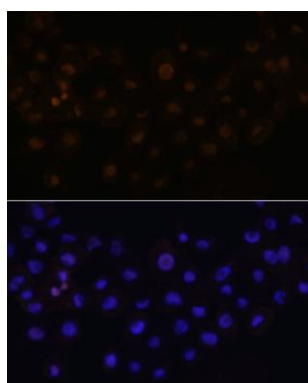
Store at -20°C. Avoid freeze / thaw cycles. Buffer: PBS with 0.02% sodium azide, 50% glycerol, pH7.3.

## Product Images

---



Western blot analysis of extracts of various cell lines, using HEY1 antibody (CAB16110) at 1:1000 dilution. Secondary antibody: HRP Goat Anti-Rabbit IgG (H+L) (CABS014) at 1:10000 dilution. Lysates/proteins: 25ug per lane. Blocking buffer: 3% nonfat dry milk in TBST. Detection: ECL Basic Kit (CABM00020). Exposure time: 60s.



Immunofluorescence analysis of A431 cells using HEY1 antibody (CAB16110) at dilution of 1:100. Blue: DAPI for nuclear staining.