

# PLEKHG4 Rabbit Polyclonal Antibody



CAB16112

---

## Product Information

### Size:

20uL, 50uL, 100uL, 200uL

### Observed MW:

131kDa

### Calculated MW:

20kDa/122kDa/130kDa

### Applications:

WB

### Reactivity:

Rat

## Protein Background

The protein encoded by this gene can function as a guanine nucleotide exchange factor (GEF) and may play a role in intracellular signaling and cytoskeleton dynamics at the Golgi apparatus. Polymorphisms in the region of this gene have been found to be associated with spinocerebellar ataxia in some study populations. Alternative splicing results in multiple transcript variants.

## Immunogen information

### Gene ID:

25894

### Uniprot

Q58EX7

### Synonyms:

PLEKHG4; ARHGEF44; PRTPHN1; SCA4

## Antibody Information

### Recommended dilutions:

WB 1:500 - 1:2000

### Source:

Rabbit

### Isotype:

IgG

### Purification:

Affinity purification

### Immunogen:

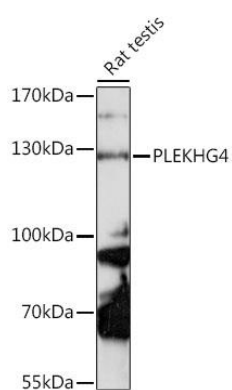
Recombinant fusion protein containing a sequence corresponding to amino acids 710-1010 of human PLEKHG4 (NP\_001123199.1).

### Storage:

Store at -20°C. Avoid freeze / thaw cycles. Buffer: PBS with 0.02% sodium azide, 50% glycerol, pH7.3.

## Product Images

---



Western blot analysis of extracts of rat testis, using PLEKHG4 antibody (CAB16112) at 1:1000 dilution. Secondary antibody: HRP Goat Anti-Rabbit IgG (H+L) (CABS014) at 1:10000 dilution. Lysates/proteins: 25ug per lane. Blocking buffer: 3% nonfat dry milk in TBST. Detection: ECL Enhanced Kit (CABM00021). Exposure time: 90s.