

EML4 Rabbit Polyclonal Antibody



CAB16117

Product Information

Size:

20uL, 50uL, 100uL, 200uL

Observed MW:

120kDa

Calculated MW:

102kDa/108kDa

Applications:

WB IHC IF

Reactivity:

Human, Mouse, Rat

Antibody Information

Recommended dilutions:

WB 1:500 - 1:2000 IHC 1:50
- 1:200 IF 1:50 - 1:200

Source:

Rabbit

Isotype:

IgG

Purification:

Affinity purification

Protein Background

This gene is a member of the echinoderm microtubule associated protein-like family. The encoded WD-repeat protein may be involved in microtubule formation. Abnormal fusion of parts of this gene with portions of the anaplastic lymphoma receptor tyrosine kinase gene, which generates EML4-ALK fusion transcripts, is one of the primary mutations associated with non-small cell lung cancer. Alternative splicing of this gene results in two transcript variants.

Immunogen information

Gene ID:

27436

Uniprot

Q9HC35

Synonyms:

EML4; C2orf2; ELP120; EMAP-4; EMAPL4; ROPP120

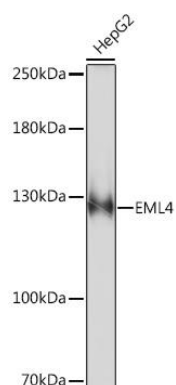
Immunogen:

Recombinant fusion protein containing a sequence corresponding to amino acids 360-560 of human EML4 (NP_061936.2).

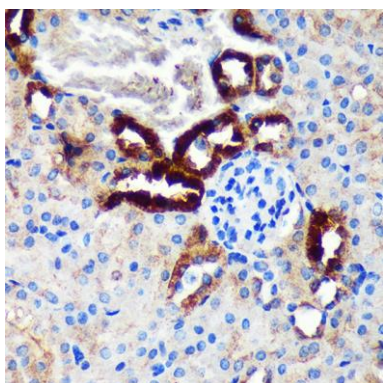
Storage:

Store at -20°C. Avoid freeze / thaw cycles. Buffer: PBS with 0.02% sodium azide, 50% glycerol, pH7.3.

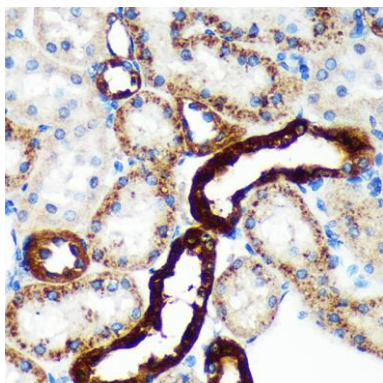
Product Images



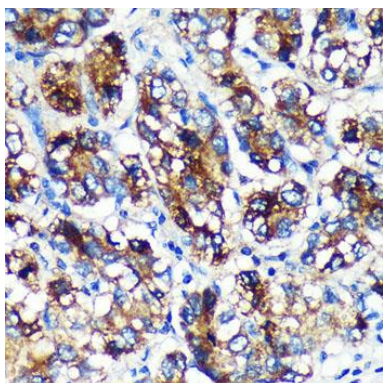
Western blot analysis of extracts of HepG2 cells, using EML4 Rabbit pAb (CAB16117) at 1:1000 dilution. Secondary antibody: HRP Goat Anti-Rabbit IgG (H+L) (CABS014) at 1:10000 dilution. Lysates/proteins: 25ug per lane. Blocking buffer: 3% nonfat dry milk in TBST. Detection: ECL Basic Kit (CABM00020). Exposure time: 90s.



Immunohistochemistry of paraffin-embedded Mouse kidney using EML4 Rabbit pAb (CAB16117) at dilution of 1:100 (40x lens).



Immunohistochemistry of paraffin-embedded Rat kidney using EML4 Rabbit pAb (CAB16117) at dilution of 1:100 (40x lens).



Immunohistochemistry of paraffin-embedded Human liver cancer using EML4 Rabbit pAb (CAB16117) at dilution of 1:100 (40x lens).